

# **BRYAN STEAM**

## **Automatic Surface and Bottom Blowdown System**



### **Benefits**

- Helps maintain safe levels of dissolved solids in boiler water
- Prevents scale formation
- Helps to eliminate costly down time
- Frees boiler operator for other duties

### **Features**

- UL/CSA recognized components
- Honeywell 24 hour time clock
- Dial marked in quarter hour increments
- Motorized ball valve with state-of-the-art electric actuator
- Valve actuator is sealed and permanently lubricated
- Controls enclosed in a NEMA Type 1 enclosure



All boilers require proper care and maintenance to maintain optimal performance. In particular, steam boilers will operate more efficiently if serviced by either a surface or bottom blowdown system. Bryan Boilers can provide these systems in either manual or automatic designs. A regular blowdown procedure to remove accumulated sludge will extend the life and performance of your boiler. A BRYAN AUTOMATIC BLOWDOWN SYSTEM will assure that your boiler has regular blowdown on a preset schedule.

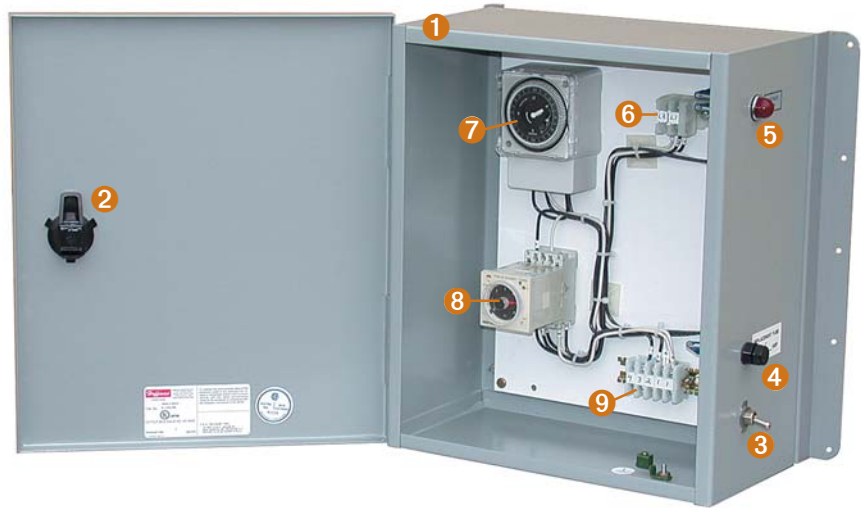
The time and duration of the blowdown period is selectable. Multiple sequences during a

24-hour period can be achieved if necessary.

The system is comprised of a 24-hour synchronous drive time clock and a time delay relay in a NEMA Type 1 panel. This controls a motorized ball valve. Our bottom blowdown system includes manually operated quick opening and slow opening blowdown valves. Our surface blowdown system includes a gate valve and a motorized valve. The bottom blowdown is piped to allow for manual bypassing of the automatic system should the need arise. These systems can be installed at the factory or are available for field installation on existing boilers.

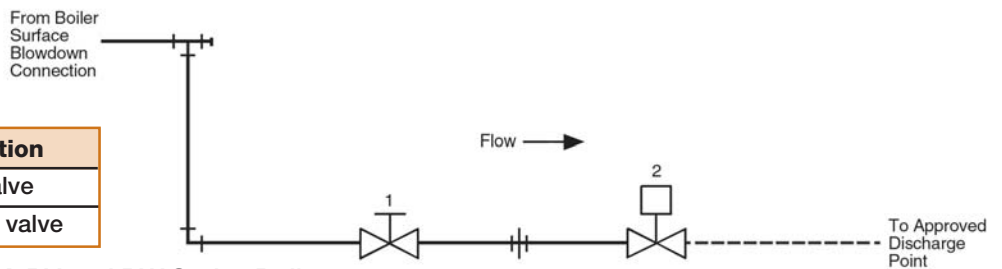
# Bryan Automatic Surface and Bottom Blowdown System

1. NEMA Type 1 Panel
2. Panel door latch
3. On-off switch
4. Fuse
5. Indicating lamp
6. Power supply terminals
7. 24-hour time clock
8. Time delay relay
9. Terminals to motorized ball valve



## Recommended piping diagram for Automatic Surface Boiler Blowdown System\*

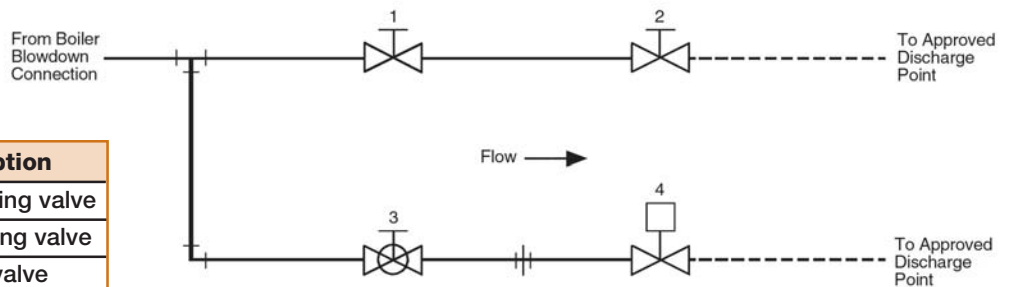
Item	Qty.	Description
1	1	Gate valve
2	1	Motorized valve



\* For Bryan AB, CLM, DR, F, K, RV and RW Series Boilers

## Recommended piping diagram for Automatic Bottom Boiler Blowdown System\*

Item	Qty.	Description
1	1	Quick-opening valve
2	1	Slow-opening valve
3	1	Globe valve
4	1	Motorized valve



\* For Bryan AB, CLM, DR, F, K and RV Series Boilers

NOTE: Available for RW Series, but requires additional piping.



**Bryan Steam LLC—Leaders Since 1916**  
 783 N. Chili Ave., Peru, Indiana 46970 U.S.A.  
 Phone: 765-473-6651 • Internet: www.bryanboilers.com  
 Fax: 765-473-3074 • E-mail: bryanboilers@iquest.net