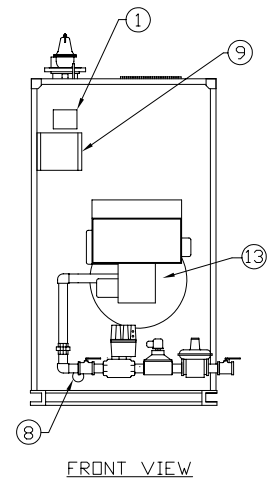
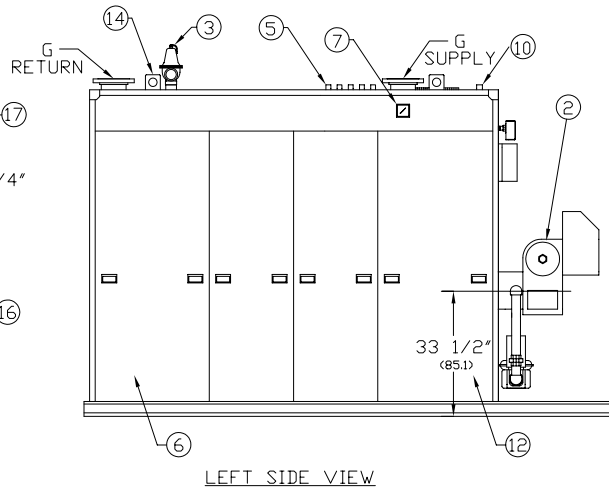
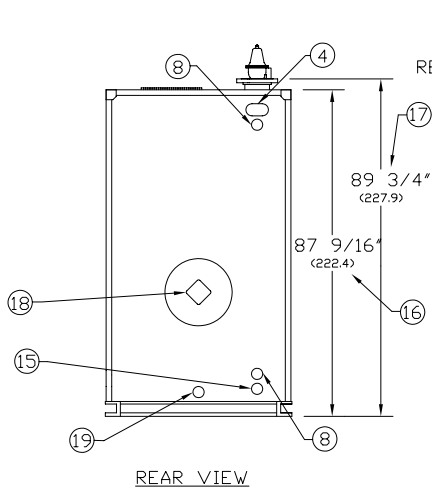
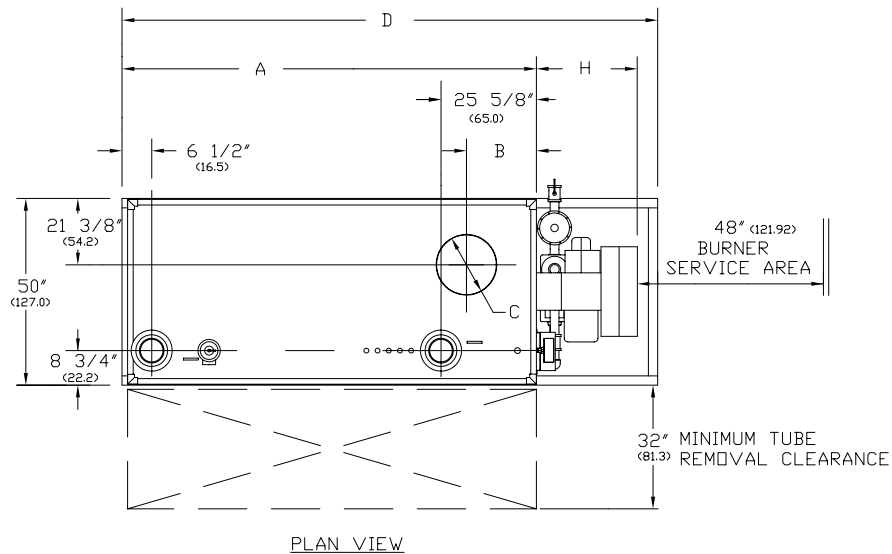


RV-KD SERIES FORCED DRAFT WATER BOILERS (RV350-RV400)

EFFECTIVE DATE: 2/17/09
REPLACES: 3/16/05

NOTES:

1. ALL DIMENSIONS ARE IN INCHES. THOSE IN PARENTHESES ARE CENTIMETERS.
2. LOCATION DIMENSIONS ARE ALL $\pm 1/2"$.
3. GAS TRAIN, CONTROL AND BURNER CONFIGURATION WILL VARY DEPENDING ON JOB SPECIFICATIONS & CONDITIONS.
4. DIMENSIONS ARE SUBJECT TO CHANGE WITHOUT NOTICE. CONSULT FACTORY FOR CERTIFIED DIMENSIONS.
5. ALL FLANGES ARE 150# UNLESS OTHERWISE NOTED, FLANGES TO STRADDLE CENTER LINE.



1. PROBE TYPE L.W.C.O.-	6. JACKET ACCESS PANELS	11. OIL PUMP LOCATION	16. FLAME OBSERVATION PORT
2. FORCED DRAFT BURNER	7. PRESS./TEMP. GAUGE	12. LIFTING LUGS	17. COMB. CHAMBER DRAIN 1" NPT
3. RELIEF VALVE'S	8. CLNDUT./INSP. DPNG.-1 1/2"NPT	13. DRAIN CONNECTION 2" NPT	
4. BURNER CENTER LINE	9. ELEC. ENCLOSURE-	14. HEIGHT OVER JACKET	
5. CONTROL TAPPINGS 3/4" NPT	10. VENT CONNECTION 1" NPT	15. HEIGHT OVER SUPPLY	

BOILER MODEL			RV350	RV400
A-LENGTH OVER JACKET			119 1/8" (302.5)	132" (335.2)
B-FLUE LOCATION			25 1/2" (64.7)	30 1/8" (76.5)
C-FLUE DIAMETER			16" (40.6)	16" (40.6)
D-LENGTH OVER BASE			143 1/2" (364.49)	153 1/4" (389.25)
G-SUPPLY / RETURN NOZZLE SIZE			4" FLG (10.2)	6" FLG (15.2)
H-BURNER EXTENSION	CONSULT FACTORY FOR BURNER EXTENSION APPLICATIONS			



BRYAN BOILERS

783 NORTH CHILI AVE
PERU, INDIANA 46970

ORDER NO.:

ORDER REV. NO.:

FORM NO.: 2166

RV SERIES FORCED DRAFT KNOCKDOWN WATER BOILERS

BOILER MODEL		RV350	RV400
INPUT	MBH	3,500	4,000
	(KW)	1,025.5	1,172.0
OUTPUT*	MBH	2,940	3,360
	(KW)	861.4	984.5
BOILER HORSEPOWER*	HP	88	100
	(KW)	860.7	983.7
TUBE DIAMETER	INCHES	1.50	1.50
	(CM)	3.81	3.81
NUMBER OF TUBES		47	55
PRESSURE VESSEL			
VOLUME	GAL	146	169
	(L)	552.6	639.7
HEATING SURFACE	SQ FT	419	490
	(SQ M)	38.9	45.5
OPERATING WEIGHT	LBS	8,367	9,249
	(KG)	3,795.4	4,195.3
SHIPPING WEIGHT	LBS	7,150	7,840
	(KG)	3,243.2	3,556.2

* Output and Boiler HP based on an average natural gas combustion efficiency.