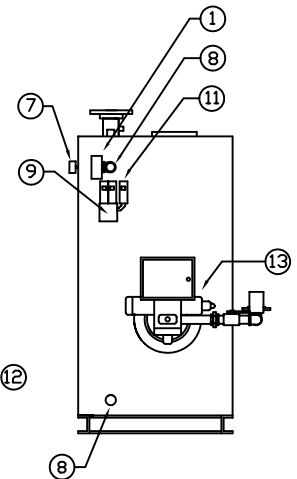
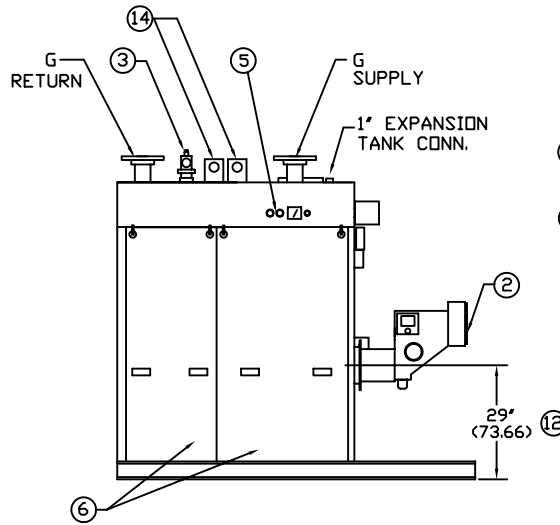
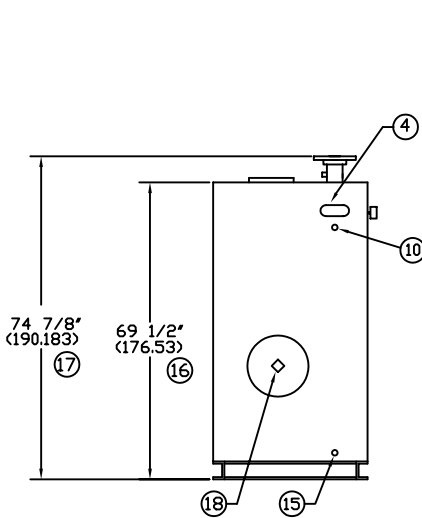
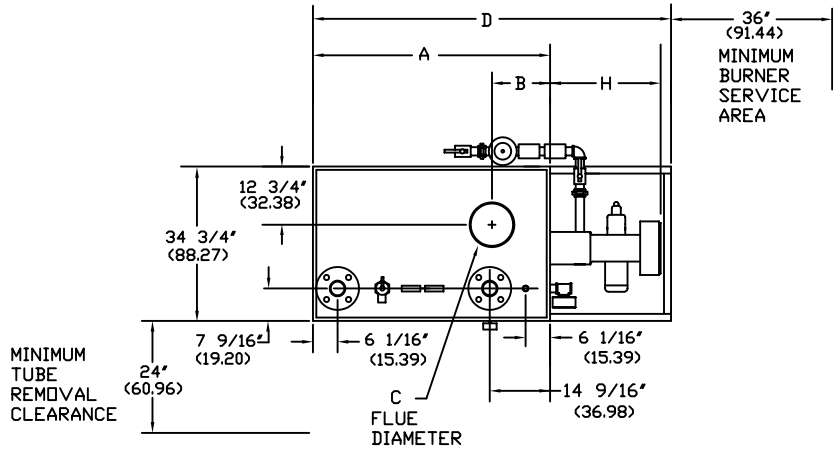


AB SERIES FORCED DRAFT WATER BOILER (AB90-AB300)

EFFECTIVE DATE: 8/12/10
REPLACES: 3/9/09

NOTES:

1. ALL DIMENSIONS ARE IN INCHES THOSE IN PARENTHESES ARE CENTIMETERS.
2. LOCATION DIMENSIONS ARE ALL $\pm 1/2"$.
3. GAS TRAIN, CONTROL AND BURNER CONFIGURATION WILL VARY DEPENDING ON JOB SPECIFICATIONS & CONDITIONS.
4. DIMENSIONS ARE SUBJECT TO CHANGE WITHOUT NOTICE. CONSULT FACTORY FOR CERTIFIED DIMENSIONS.
5. ALL FLANGES ARE 150# UNLESS OTHERWISE NOTED, FLANGES TO STRADDLE CENTER LINE.
6. AB 90 THRU AB 150 WILL HAVE ONLY (1) LIFT LUG. AB 200 THRU AB 300 WILL HAVE (2) LIFT LUGS.



- | | | | |
|-------------------------|----------------------------------|--|----------------------------|
| 1. PROBE TYPE L.W.C.O.- | 6. JACKET ACCESS PANELS | 11. AQUASTATS | 16. HEIGHT OVER JACKET |
| 2. FORCED DRAFT BURNER | 7. PRESS./TEMP. GAUGE | 12. BURNER CENTER LINE | 17. HEIGHT OVER SUPPLY |
| 3. RELIEF VALVE | 8. CLNDUT./INSP. OPNG.-1 1/2"NPT | 13. OIL PUMP LOCATION | 18. FLAME OBSERVATION PORT |
| 4. ASME NAMEPLATE | 9. ELEC. ENCLOSURE- | 14. LIFTING LUG(S) <small>(SEE NOTE 6)</small> | 19. |
| 5. CONTROL CONNECTION | 10. AUX. CONNECTION 1 1/4" NPT | 15. DRAIN CONNECTION | 20. |

| BOILER MODEL | AB 90 | AB 120 | AB 150 | AB 200 | AB 250 | AB 300 |
|-----------------------------|-----------------------|----------------------|---------------------|----------------------|----------------------|------------------------|
| A-LENGTH OVER JACKET | 44 15/16" (114.14) | 54 3/16" (137.63) | 63 1/2" (161.29) | 78 15/16" (200.5) | 94 7/16" (239.87) | 108 13/16" (276.38) |
| B-FLUE LOCATION | 12" (30.48) | 12" (30.48) | 12" (30.48) | 16 1/2" (41.91) | 15" (38.10) | 15" (38.10) |
| C-FLUE DIAMETER | 10" (25.40) | 10" (25.40) | 10" (25.40) | 10" (25.40) | 12" (30.48) | 12" (30.48) |
| D-LENGTH OVER BASE | 76" (193.04) | 85 3/8" (216.83) | 94 3/4" (240.67) | 110" (279.40) | 125 1/2" (318.77) | 139 7/8" (355.28) |
| G-SUPPLY/RETURN NOZZLE SIZE | 3" (7.62) | 3" (7.62) | 3" (7.62) | 3" (7.62) | 3" (7.62) | 3" (7.62) |

H-BURNER EXTENSION CONSULT FACTORY FOR BURNER EXTENSION APPLICATIONS



BRYAN STEAM LLC

783 NORTH CHILI AVE
PERU, INDIANA 46970

| | |
|-----------------|------|
| ORDER NO.: | |
| ORDER REV. NO.: | |
| FORM NO.: | 1997 |

AB SERIES FORCED DRAFT WATER BOILER

| BOILER MODEL | | AB90 | AB120 | AB150 | AB200 | AB250 | AB300 |
|--------------------|--------|---------|---------|---------|---------|---------|---------|
| INPUT | MBH | 900 | 1,200 | 1,500 | 2,000 | 2,500 | 3,000 |
| | (KW) | 263.7 | 351.6 | 439.5 | 586.0 | 732.5 | 879.0 |
| OUTPUT* | MBH | 752 | 1,002 | 1,253 | 1,670 | 2,088 | 2,505 |
| | (KW) | 220.2 | 293.6 | 367.0 | 489.3 | 611.6 | 734.0 |
| BOILER HORSEPOWER* | HP | 22 | 30 | 37 | 50 | 62 | 75 |
| | (KW) | 220 | 293 | 367 | 489 | 611 | 733 |
| TUBE DIAMETER | INCHES | 1.00 | 1.00 | 1.00 | 1.00 | 1.00 | 1.00 |
| | (CM) | 2.54 | 2.54 | 2.54 | 2.54 | 2.54 | 2.54 |
| NUMBER OF TUBES | | 26 | 35 | 44 | 59 | 74 | 88 |
| PRESSURE VESSEL | | | | | | | |
| VOLUME | GAL | 33 | 40 | 48 | 61 | 73 | 100 |
| | (L) | 124.9 | 151.4 | 181.7 | 230.9 | 276.3 | 378.5 |
| HEATING SURFACE | SQ FT | 113 | 148 | 184 | 244 | 303 | 360 |
| | (SQ M) | 10.5 | 13.8 | 17.1 | 22.7 | 28.2 | 33.5 |
| OPERATING WEIGHT | LBS | 2,264 | 2,570 | 2,950 | 3,550 | 4,100 | 4,580 |
| | (KG) | 1,027.0 | 1,165.8 | 1,338.1 | 1,610.3 | 1,859.8 | 2,077.5 |
| SHIPPING WEIGHT | LBS | 2,000 | 2,250 | 2,550 | 3,050 | 3,500 | 3,750 |
| | (KG) | 907.2 | 1,020.6 | 1,156.7 | 1,383.5 | 1,587.6 | 1,701.0 |

* Output and Boiler HP based on an average natural gas combustion efficiency.