

SPRAY TYPE DEAERATOR

HORIZONTAL TANK DESIGN (5,000 PPH – 30,000 PPH)

EFFECTIVE DATE: 05/05/15

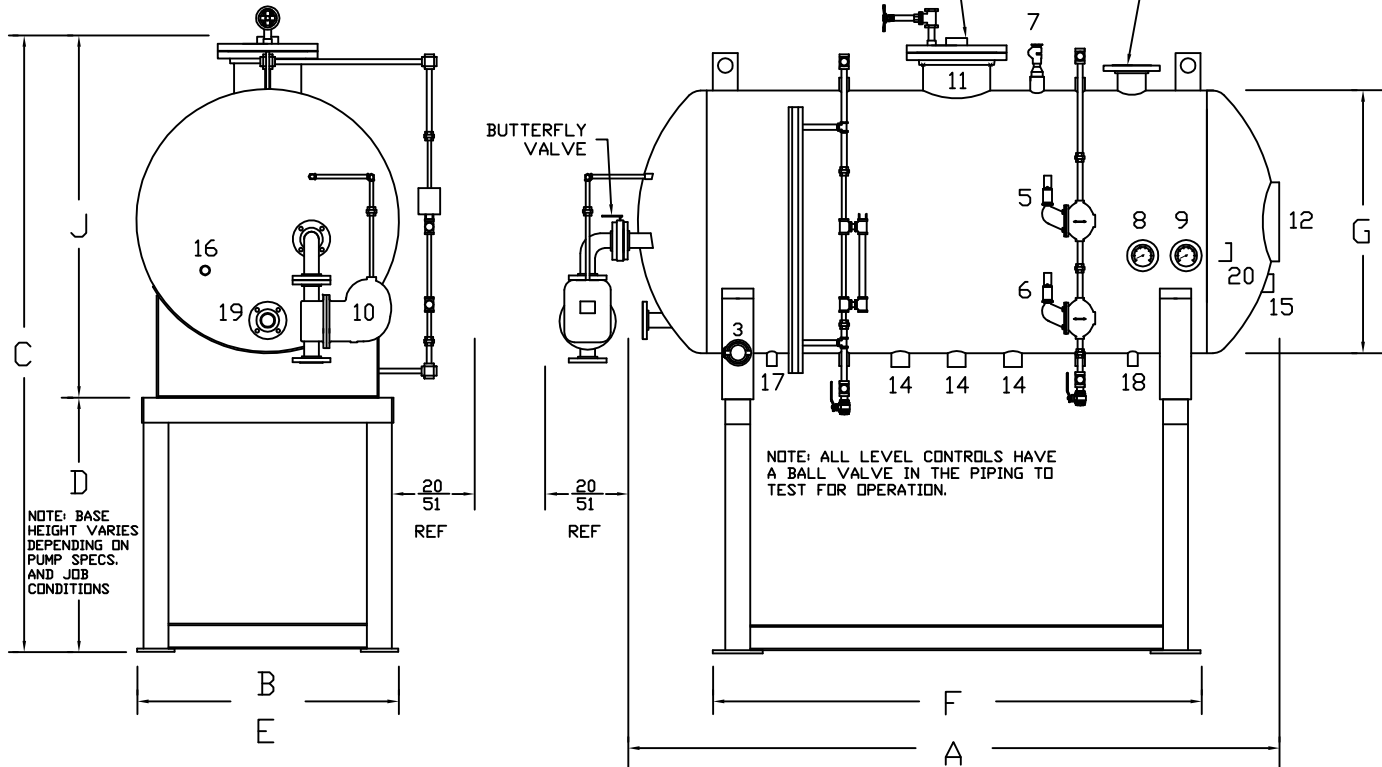
REPLACES: 06/01/05

NOTES:

1. CONTROL AND PIPING CONFIGURATIONS WILL VARY DEPENDING ON JOB SPECIFICATIONS AND CONDITIONS.
2. DIMENSIONS ARE SUBJECT TO CHANGE WITHOUT NOTICE. CONSULT FACTORY FOR CERTIFIED DIMENSIONS.

SEE FORM 2324 FOR SUGGESTED MAKE-UP WATER PIPING SCHEMATIC

SEE FORM 2323 FOR SUGGESTED STEAM PIPING SCHEMATIC



- | | | | | |
|-------------------------------|-----------------------|-------------------|-------------------|--|
| 1. RELIEF VALVE ** | 5. HIGH LEVEL CONTROL | 9. PRESSURE GAUGE | 13. VENT | 17. DRAIN |
| 2. PRESSURE REDUCING VALVE ** | 6. LOW LEVEL CONTROL | 10. OVERFLOW TRAP | 14. PUMP SUCTION | 18. SAMPLE PORT |
| 3. MAKE-UP WATER CONTROL | 7. VACUUM BREAKER | 11. SPRAY VALVE | 15. PUMP BYPASS | 19. HIGH TEMPERATURE CONDENSATE RETURN |
| 4. MAKE-UP WATER VALVE ** | 8. TEMPERATURE GAUGE | 12. MANWAY ACCESS | 16. CHEMICAL PORT | 20. MAGNESIUM ANODE |
- ** SHIPPED LOOSE, NOT SHOWN

MODEL	CAPACITY			DIMENSIONS							
	LBS/HR Kg/HR	BOILER HP KW	(STORAGE) GALLONS LITERS	(A) OVER-ALL LENGTH	(B) OVER-ALL WIDTH	(C) OVER-ALL HEIGHT	(D) OVER-ALL BASE HEIGHT	(E) OVER-ALL BASE WIDTH	(F) OVER-ALL BASE LENGTH	(G) TANK DIAMETER	(J) VESSEL HEIGHT
DSH-150-5-2-*	5,000 2,268	145 1,422	200 757	106 269	36 91	103 262	BASE DIMENSIONS WILL CHANGE DEPENDING ON PUMP SELECTION AND JOB CONDITIONS. CONSULT FACTORY FOR BASE DIMENSIONS.	36 91	80 203	36 91	54-1/2 138
DSH-150-10-2-*	10,000 4,536	290 2,844	200 757	106 269	36 91	103 262		36 91	80 203	36 91	54-1/2 138
DSH-150-15-3-*	15,000 6,804	435 4,267	300 1,135	103 262	42 107	109 277		42 107	75 191	42 107	60-1/2 154
DSH-150-20-4-*	20,000 9,072	580 5,689	400 1,514	96 244	48 122	115 292		48 122	66 168	48 122	66-1/2 169
DSH-150-25-5-*	25,000 11,340	725 7,111	500 1,892	115 292	48 122	115 292		48 122	85 216	48 122	66-1/2 169
DSH-150-30-6-*	30,000 13,608	870 8,534	600 2,271	134 340	48 122	115 292		48 122	104 264	48 122	66-1/2 169

BRYAN STEAM LLC

783 N. CHILI AVE
PERU, INDIANA 46970

FORM NO.:

2008

	DSH-5		DSH-10		DSH-15		DSH-20		DSH-25		DSH-30	
Deaerator Design												
Capacity	(pph)	(Kg/Hr)	(pph)	(Kg/Hr)	(pph)	(Kg/Hr)	(pph)	(Kg/Hr)	(pph)	(Kg/Hr)	(pph)	(Kg/Hr)
	5000	2269	10000	4537	15000	6806	20000	9074	25000	11343	30000	13612
Number of Spray Valves	1		1		1		1		1		1	
Style of Spray Valve	29660		29660		29660		29660		29660		29660	
Pressure Vessel												
Diameter	(in.)	(cm.)	(in.)	(cm.)	(in.)	(cm.)	(in.)	(cm.)	(in.)	(cm.)	(in.)	(cm.)
	36	91.44	36	91.44	42	106.68	48	121.92	48	121.92	48	121.92
Shell Length	80	203.2	80	203.2	75	190.5	66	167.64	85	215.9	104	264.16
Head Thickness	0.25	0.64	0.25	0.64	0.3125	0.79	0.3125	0.79	0.3125	0.79	0.3125	0.79
Shell Thickness	0.25	0.64	0.25	0.64	0.3125	0.79	0.3125	0.79	0.3125	0.79	0.3125	0.79
Connections/Opening												
Spray Valve Access	(in.)	(cm.)	(in.)	(cm.)	(in.)	(cm.)	(in.)	(cm.)	(in.)	(cm.)	(in.)	(cm.)
	10	25.40	10	25.40	10	25.40	10	25.40	10	25.40	10	25.40
Storage Access	12x16	30.5x40.6	12x16	30.5x40.6	12x16	30.5x40.6	12x16	30.5x40.6	12x16	30.5x40.6	12x16	30.5x40.6
Undeareated Water Inlet	2.5	6.35	2.5	6.35	2.5	6.35	2.5	6.35	2.5	6.35	2.5	6.35
Steam Inlet	4	10.16	4	10.16	4	10.16	6	15.24	6	15.24	6	15.24
High Temperature Return	3	7.62	3	7.62	3	7.62	3	7.62	3	7.62	3	7.62
Pump Suction	2	5.08	2	5.08	3	7.62	3	7.62	3	7.62	3	7.62
Pump Bypass	2	5.08	2	5.08	2	5.08	3	7.62	3	7.62	3	7.62
Overflow	2	5.08	2	5.08	2	5.08	3	7.62	3	7.62	3	7.62
Drain	1	2.54	1	2.54	1	2.54	1	2.54	1	2.54	1	2.54
Sample	1	2.54	1	2.54	1	2.54	1	2.54	1	2.54	1	2.54
Standard Level from Bottom of Storage Tank												
Overflow	(in.)	(cm.)	(in.)	(cm.)	(in.)	(cm.)	(in.)	(cm.)	(in.)	(cm.)	(in.)	(cm.)
	18	45.72	18	60.96	24	60.96	30	76.2	30	76.2	30	76.2
High Level	17	43.18	17	58.42	23	58.42	29	73.66	29	73.66	29	73.66
Low Level	4	10.16	4	10.16	4	10.16	4	10.16	4	10.16	4	10.16
Overflow	(gallons)	(liters)	(gallons)	(liters)	(gallons)	(liters)	(gallons)	(liters)	(gallons)	(liters)	(gallons)	(liters)
	201	761	201	761	312	1181	413	1563	511	1934	609	2305
High Level	186	704	186	704	296	1120	396	1499	491	1858	585	2214
Low Level	24	91	24	91	21	79	24	91	30	114	37	140