

OVERFLOW TRAP

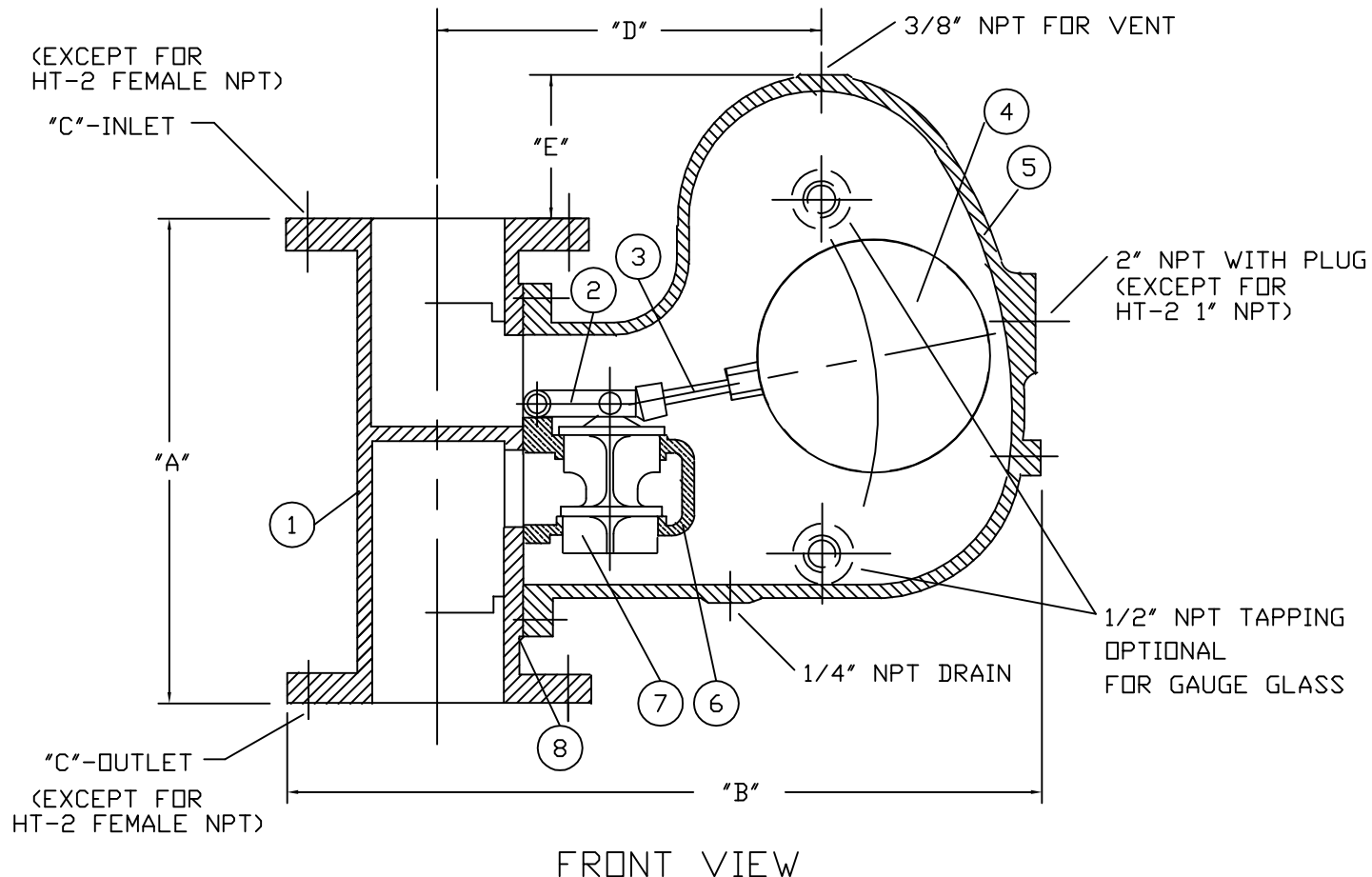
EFFECTIVE DATE: 4/19/18

REPLACES: 1/27/14

NOTES:

1. DIMENSIONS ARE SUBJECT TO CHANGE WITHOUT NOTICE. CONSULT FACTORY FOR CERTIFIED DIMENSIONS.

MATERIALS OF CONSTRUCTION : CAST IRON
EXTERNAL SURFACES PAINTED WITH ONE COAT
OF HEAT RESISTANT BLACK PAINT.



ITEM	MAT'L.	DESCRIPTION
8	FR162	3/16" RUBBER GASKET
7	BRASS	VALVE
6	BRASS	VALVE SEAT CASING
5	C.I.	TRAP HOOD
4	304 SS	7" DIA. FLOAT
3	C'STL.	PIPE
2	BRASS	FLOAT LEVER
1	C.I.	TRAP BODY

NOTE -- ITEMS 2, 6, AND 7 MAKE A COMPLETE VALVE ASSEMBLY.

MODELS	DIMENSIONS				
	A	B	C	D	E
HT-2	6-3/4"	14-3/4"	2" NPT	7-7/16"	3-3/4"
HT-3	14-3/4"	21-1/2"	3" FLG	11-3/4"	4-1/8"
HT-4	14-7/8"	22-1/2"	4" FLG	11-3/4"	4-1/8"
HT-6	14-3/4"	31-3/4"	6" FLG	20-15/16"	3"

FLANGED INLETS & OUTLETS HAVE BOLT PATTERNS TO MATCH 150# ANSE FLANGES

MAX PRESS/TEMP-50 PSIG/180°F