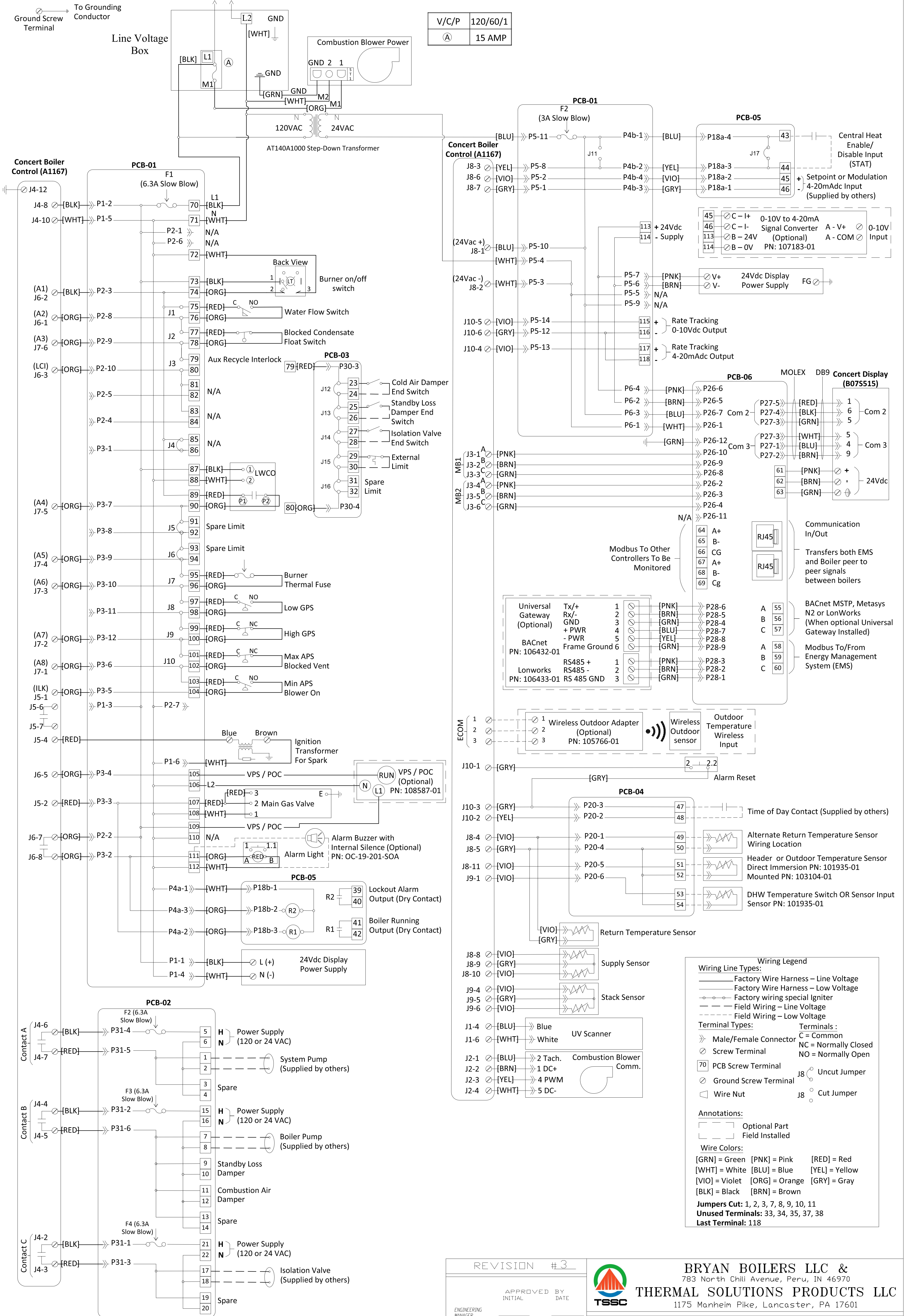


Boiler must be grounded in accordance with ANSI National Electric Code.

Connect to V/C/P Power Supply

IMPORTANT: The wiring shown for devices accepted and installed by others is suggested only. Certification of, and responsibility for the correctness of the wiring is the responsibility of the supplier of these devices. Bryan Steam LLC accepts no responsibility for the correctness or safety or execution of this wiring or of the operation of such devices.

V/C/P	120/60/1
(A)	15 AMP



Wiring Legend

Wiring Line Types:

- Factory Wire Harness – Line Voltage
- Factory Wire Harness – Low Voltage
- Factory wiring special Igniter
- Field Wiring – Line Voltage
- Field Wiring – Low Voltage

Terminal Types:

- Terminals:
- C = Common
- NC = Normally Closed
- NO = Normally Open
- 70 PCB Screw Terminal
- Ground Screw Terminal
- Wire Nut
- J8 Uncut Jumper
- J8 Cut Jumper

Annotations:

- Optional Part
- Field Installed

Wire Colors:

- [GRN] = Green [PNK] = Pink [RED] = Red
- [WHT] = White [BLU] = Blue [YEL] = Yellow
- [VIO] = Violet [ORG] = Orange [GRY] = Gray
- [BLK] = Black [BRN] = Brown

Jumpers Cut: 1, 2, 3, 7, 8, 9, 10, 11
Unused Terminals: 33, 34, 35, 37, 38
Last Terminal: 118

REVISION	#3
APPROVED BY	DATE
ENGINEERING MANAGER	
REVISED BY	

BRYAN BOILERS LLC & THERMAL SOLUTIONS PRODUCTS LLC
 783 North Chili Avenue, Peru, IN 46970
 1175 Manheim Pike, Lancaster, PA 17601

DWG. TITLE: **ARCTIC/FREE-FLEX 1500-3000 120v A/C SINGLE PHASE WIRING DIAGRAM**

DRAWN BY: EWS	DATE: 7/27/17	SCALE: NONE	DISK: FS	DWG. NO: WD-874
---------------	---------------	-------------	----------	-----------------

THIS DOCUMENT CONTAINS CONFIDENTIAL INFORMATION WHICH IS THE PROPERTY OF BRYAN STEAM LLC. THIS DOCUMENT MAY NOT BE REPRODUCED, TRANSFERRED OR USED, OR ITS CONTENTS DISCLOSED, WITHOUT THE WRITTEN PERMISSION OF THE OWNER.