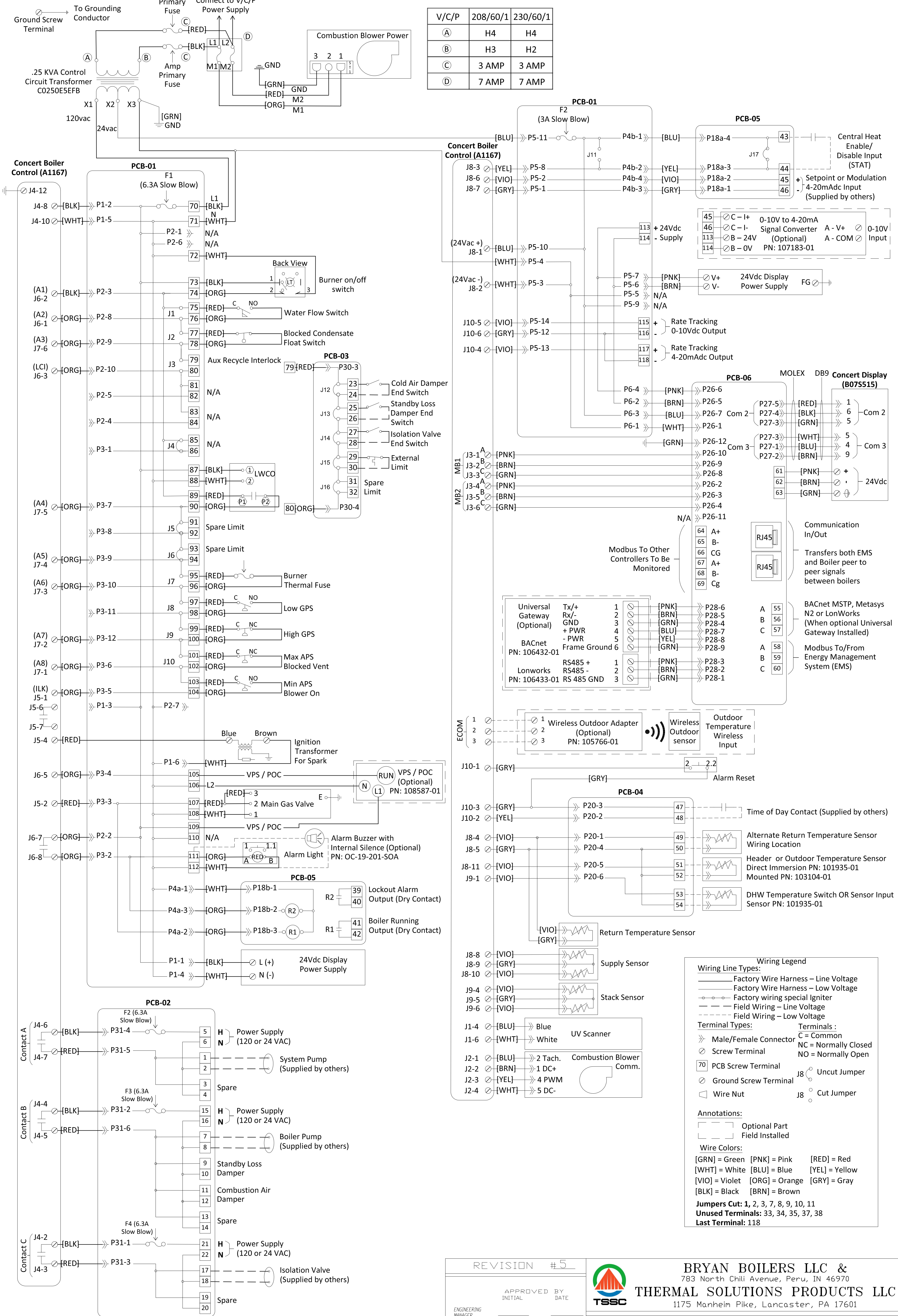


Boiler must be grounded in accordance with ANSI National Electric Code.

IMPORTANT: The wiring shown for devices supplied and installed by others is suggested only. Certification of, and responsibility for the correctness of the wiring is the responsibility of the supplier of these devices. Bryan Steam LLC accepts no responsibility for the correctness or safety or execution of this wiring or of the operation of such devices.

V/C/P	208/60/1	230/60/1
(A)	H4	H4
(B)	H3	H2
(C)	3 AMP	3 AMP
(D)	7 AMP	7 AMP



REVISION #5	
APPROVED BY	DATE
INITIAL	
ENGINEERING MANAGER	
REVISED BY	

BRYAN BOILERS LLC &
 783 North Chili Avenue, Peru, IN 46970
THERMAL SOLUTIONS PRODUCTS LLC
 1175 Manheim Pike, Lancaster, PA 17601

DWG. TITLE: ARCTIC 1500-3000 208-230V SINGLE PHASE WIRING DIAGRAM

DRAWN BY: BCH DATE: 02/03/17 SCALE: NONE DISK: FS DWG. NO: WD-867

THIS DOCUMENT CONTAINS CONFIDENTIAL INFORMATION WHICH IS THE PROPERTY OF BRYAN STEAM LLC. THIS DOCUMENT MAY NOT BE REPRODUCED, TRANSFERRED OR USED, OR ITS CONTENTS DISCLOSED, WITHOUT THE WRITTEN PERMISSION OF THE OWNER.