

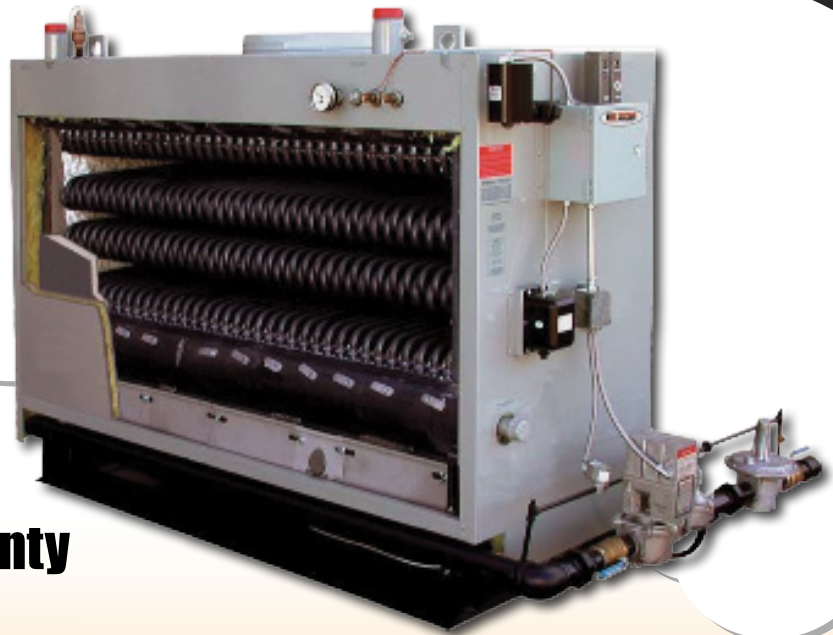


Brewing Steam

Since 1916

Simple Start Up Solution

- **8-72 Barrel Capacity**
- **7 Minutes to Steam at 50 °**
- **Field Repairable**
- **25 Year Thermal Shock Warranty**



At the heart of every Bryan Steam Boiler is our original flexible water tube designed with longevity and ease of service in mind, trademarks of Bryan. The natural movement, or "flex," eliminates thermal shock and stress commonly absorbed by competitive models.

No welds from tube to header permits field repair or change-out without welding, rolling, ASME inspections or H stamp

approvals. You can maintain your boiler yourself and no special tools are required. Boilers can be packaged or knocked down and assembled on site to fit into limited spaces.

Bryan's methodology of tubes and weldless connections put you in charge of boiler maintenance, a common sense approach that has stood the test of time for over 100 years.

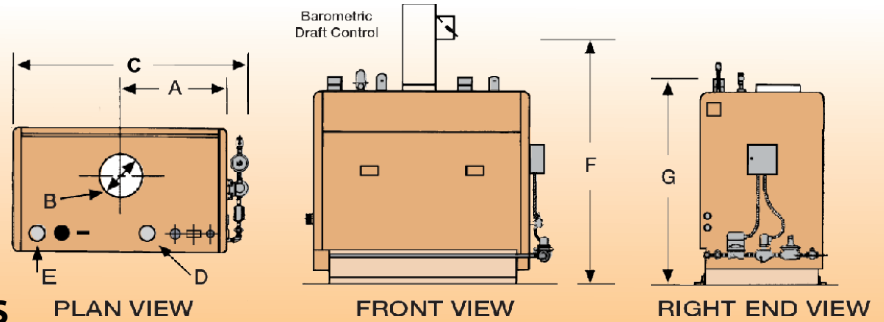
DESIGN ASSIST AND COMPLETE ENGINEERED SKID PACKAGES



BRYAN CLM SERIES BOILER SPECIFICATIONS

BOILER MODEL	INPUT MBH (KW)	BHP	STEAM OUTPUT LBS/HR*	HEATING SURFACE SQ FT (M2)	APPROX SHIP WT LBS (KG)
CLM-90	900 (264)	21 (206)	742 (337)	110 (10.2)	1,450 (658)
CLM-120	1,200 (352)	29 (284)	990 (449)	145 (13.5)	1,750 (794)
CLM-150	1,500 (440)	36 (353)	1,237 (561)	180 (16.7)	2,050 (930)
CLM-180	1,800 (527)	43 (421)	1,485 (674)	215 (20.0)	2,350 (1,066)
CLM-210	2,100 (615)	50 (490)	1,732 (786)	251 (23.3)	2,650 (1,202)
CLM-240	2,400 (703)	57 (559)	1,979 (898)	287 (26.7)	2,950 (1,338)
CLM-270	2,700 (791)	64 (627)	2,227 (1,010)	322 (29.9)	3,500 (1,588)
CLM-300	3,000 (879)	72 (706)	2,474 (1,122)	360 (33.5)	3,950 (1,792)

NOTES: *Lbs. steam per hour from and at 212°F



BRYAN CLM SERIES STEAM SPECIFICATIONS

BOILER MODEL NUMBER	B FLUE LOCATION	C FLUE SIZE	D OVERALL LENGTH	F SUPPLY NOZZLE		G FEED CONN	J HEIGHT OVER BAROMETRIC	L FLOOR TO FLOW NOZZLE
				15 PSI	150 PSI			
				CLM-90-S	20 3/4 (52.70)			
CLM-120-S	25 1/2 (64.37)	16 (40.64)	64 1/8 (164.30)	6 FLG (15.24)	3 NPT (7.62)	1 1/2 NPT (3.81)	79 13/16 (202.72)	71 1/2 (181.61)
CLM-150-S	29 27/32 (75.80)	18 (45.72)	73 1/16 (187.16)	6 FLG (15.24)	3 NPT (7.62)	1 1/2 NPT (3.81)	80 5/16 (203.99)	71 1/2 (181.61)
CLM-180-S	34 5/16 (87.78)	20 (50.80)	83 1/8 (211.13)	6 FLG (15.24)	3 NPT (7.62)	1 1/2 NPT (3.81)	80 13/16 (205.26)	71 1/2 (181.61)
CLM-210-S	39 3/16 (99.53)	20 (50.80)	92 3/8 (234.63)	6 FLG (15.24)	3 NPT (7.62)	1 1/2 NPT (3.81)	81 5/16 (206.53)	71 1/2 (181.61)
CLM-240-S	44 (111.76)	20 (50.80)	102 (259.08)	6 FLG (15.24)	3 NPT (7.62)	1 1/2 NPT (3.81)	81 13/16 (207.80)	71 1/2 (181.61)
CLM-270-S	48 1/2 (123.19)	20 (50.80)	111 (281.94)	6 FLG (15.24)	3 NPT (7.62)	1 1/2 NPT (3.81)	82 5/16 (209.07)	71 1/2 (181.61)
CLM-300-S	53 3/16 (135.09)	20 (50.80)	120 5/8 (306.38)	6 FLG (15.24)	3 NPT (7.62)	1 1/2 NPT (3.81)	82 13/16 (210.34)	71 1/2 (181.61)

BRYAN CLM SERIES BOILER STANDARD AND OPTIONAL EQUIPMENT

STANDARD EQUIPMENT FURNISHED

Steam Boiler

Steam pressure gauge, steam pressure control, combination low water cutoff and pump control, auxiliary low water cutoff with manual reset, high limit pressure control, ASME-rated boiler relief valve, water glass set.

Atmospheric Equipment

Electronic combustion safety control, automatic operating gas valve, safety gas valve, pilot solenoid valve, electric ignition assembly, main manual gas shut-off valve, pilot shut-off valve, pilot and main gas pressure regulators, barometric draft controller, all controls installed and wired standard voltage 120/1/60.

Optional Equipment

1. Alarm bells or horns
2. UL, CUL, CSD-1, FM, other insurance approved control systems,
3. Low fire start, Hi-Lo or modulating fire control.
4. Special construction: left hand, knocked down.



Bryan Steam LLC
783 N. Chili Ave
Peru, IN 46970

PH: 765-473-6651
inquiry@bryansteam.com
www.BryanBoilers.com