



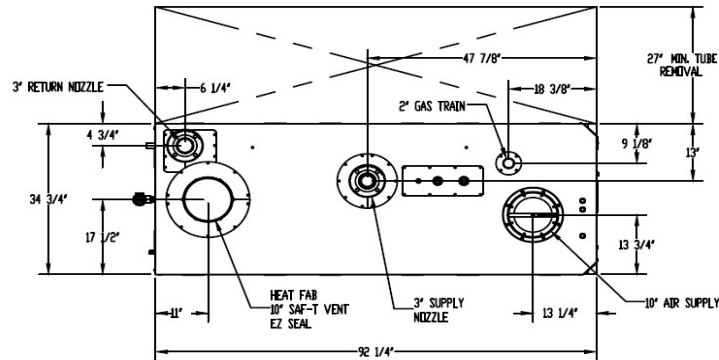
FREE FLEX CONDENSING BOILERS, REVERSE CONSTRUCTION - SUBMITTAL DATA SHEET

| RATINGS AND CAPACITIES | | |
|------------------------------------|---------------------------------|---------|
| Input - Low Fire | 600,000 | BTU/HR |
| Input - High Fire | 3,000,000 | BTU/HR |
| Output - High Fire | 2,850,000 | BTU/HR |
| Boiler Horsepower | 85.1 | BHP |
| Thermal Efficiency | 95.0% | |
| Low Fire Thermal Efficiency | Up to 99% | |
| Heating Surface | 918 | Sq.Ft. |
| Water Content | 39.3 | Gallons |
| Fuel | Natural Gas | |
| Firing Rate | Full Modulation | |
| Burner Turndown | 5:1 | |
| Low NOx Emissions | Capable, Consult Factory | |
| Inlet Gas Pressure (NG) | 4" wc | Min. |
| | 14" wc | Max. |
| Shipping Weight, Approximate | 3,060 | lbs |

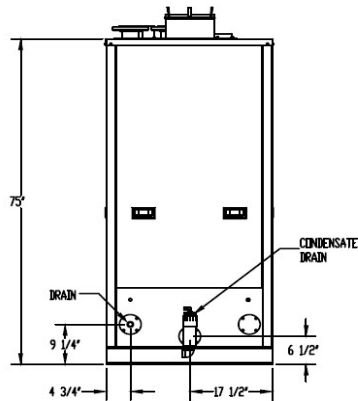
| | |
|--|---|
| ASME Section IV (Max 160 PSIG / 210°F) |  |
| ETL Certified to UL 795 and CAN 3.1.1 |  |

| DIMENSIONS / CONNECTIONS | |
|--|-----------|
| - Height | 75" |
| - Width | 34-3/4" |
| - Length | 92-1/4" |
| - Supply / Return Connections | 3" Flange |
| - Vent / Air Intake Connections | 10" |
| - Condensate / Boiler Drain Conn. | 1" |
| - Gas Connection | 2" |

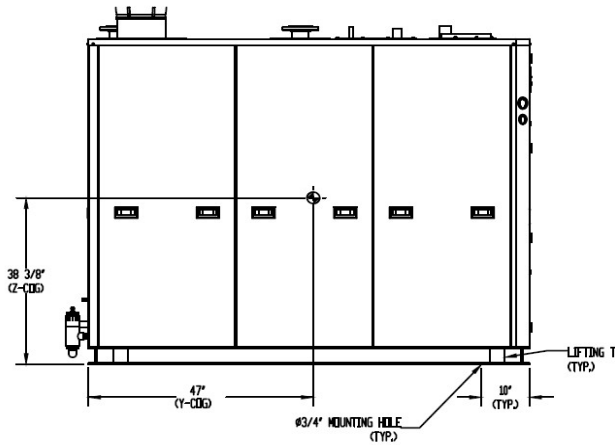
| STANDARD EQUIPMENT | |
|--|--|
| - ASME Stainless Steel Heat Exchanger | |
| - Stainless Steel Mesh Pre-Mix Burner | |
| - Variable Speed Combustion Blower | |
| - Concert Boiler Control™ (24v) With 7" Color Touch Screen | |
| > Peer-To-Peer Boiler Communications (Up to 8 Units) | |
| > Energy Management System (EMS) Interface | |
| > USB Data Port Transfer | |
| > Self-Guiding Diagnostics | |
| > Unmatched Archives | |
| - High Limit Temperature Control, Manual Reset | |
| - Blower Motor (See HP below with voltage options) | |
| - Water Flow Switch | |
| - Low Water Cutoff, Manual Reset | |
| - Condensate Trap | |
| - Blocked Condensate Switch | |
| - Combustion Air Proving Switch | |
| - Blocked Vent Air Switch | |
| - Pressure Relief Valve | |
| - Pressure & Temperature Gauges | |
| - Supply & Return Temperature Sensors | |
| - Flue Gas Temperature Sensor | |
| - Modulating Gas Valve | |
| - Direct Spark Ignition / UV Scanner | |
| - High/Low Gas Pressure Switches, Manual Reset | |
| - 120/1/60 Line Voltage (15.6 Amps); 1.5 HP Blower | |
| - 208-240/1/60 Line Voltage (8.3 Amps); 1.5 HP Blower | |
| - 208-240/3/60 Line Voltage (9.5 Amps); 3 HP Blower | |
| - 480/3/60 Line Voltage (5.25 Amps); 3.2 HP Blower | |
| - Category IV Individual Venting | |
| - Category II Common Venting with Engineered Vent System | |
| - Polypropylene & Stainless Steel Acceptable *Material | |
| - Ducted or Room Combustion Air Intake | |



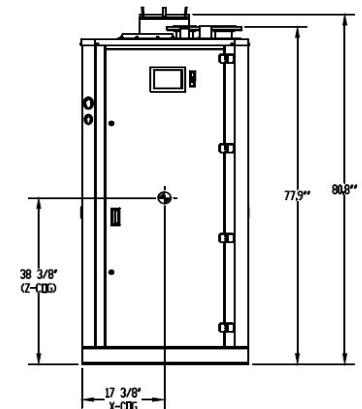
TOP VIEW



REAR VIEW



LEFT SIDE VIEW



FRONT VIEW

- NOTES:
1. Dimensions shown are for reference only
 2. See O&M for required installation clearances
 3. *Flue system material shall be capable of continuous operation at 230°F or higher, have the same corrosion resistance to flue gas condensation as AL29-4C and shall be certified to UL 1738 – venting system for gas-burning appliances cat II, III and IV.

| FLOWS AND PRESSURE DROPS | | | | | |
|--------------------------|------------|--------------|-----------------|------------|--------------|
| Delta T | Flow (GPM) | Δ P (Ft. Hd) | Delta T | Flow (GPM) | Δ P (Ft. Hd) |
| 20°F Δ T (Max) | 285 | 28.70 | 50°F Δ T | 114 | 4.59 |
| 25°F Δ T | 228 | 18.37 | 60°F Δ T | 95 | 3.19 |
| 30°F Δ T | 190 | 12.76 | 70°F Δ T | 81 | 2.34 |
| 35°F Δ T | 163 | 9.37 | 80°F Δ T | 71 | 1.79 |
| 40°F Δ T | 143 | 7.18 | 90°F Δ T | 63 | 1.42 |
| 45°F Δ T | 127 | 5.67 | 100°F Δ T (Min) | 57 | 1.15 |

FF-3000R

PROPERTY OF
BRYAN

783 N Chili Ave | Peru, IN 46970

Boiler Technology Leadership Since 1916

www.bryanboilers.com

Updated 8.4.22