

B
FIT

BIG OUTPUT
Designed to FIT



1000 - 3999 MBH
HIGH EFFICIENCY
COMMERCIAL CONDENSING

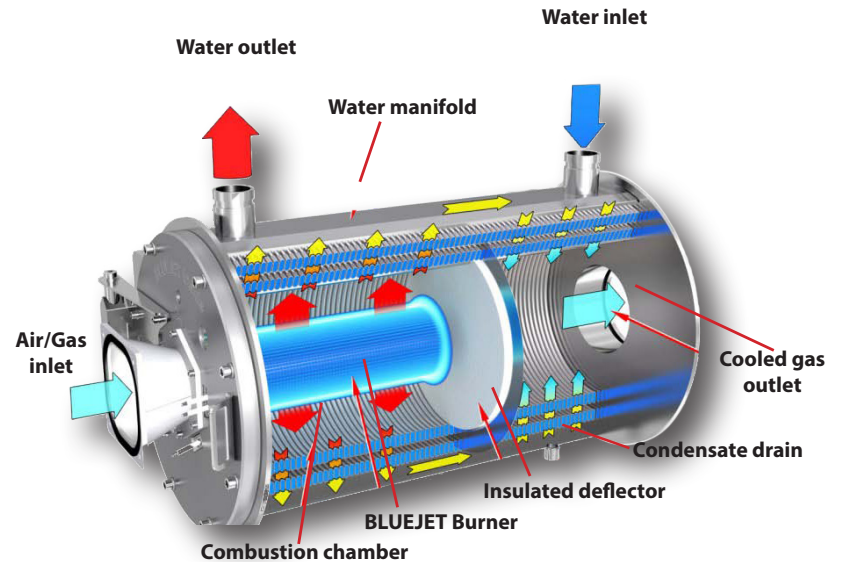
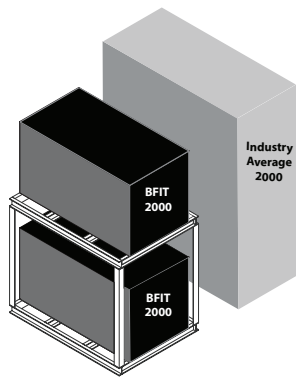
BTM **BRYAN**[®]
BOILERS

BIG OUTPUT DESIGNED TO FIT

Have you ever noticed how condensing boilers all look the same and just how BIG they are? Tall, vertical boxes consume space from floor to ceiling with no thought of service, maintenance or access to heat exchanger and burner. With natural improvement over time, why haven't they become smaller like everything else? The BFIT Commercial Condensing Series from Bryan® provides unprecedented output in minimal space, serviceability and accommodates both variable flow or primary/secondary piping. Available in 1000, 1250, 1500, 1999, 2500, 3000, 3500, and 3999 MBH inputs, BFIT advances condensing design beyond tall, unserviceable boxes!

GAME CHANGING ADVANCEMENT

The BFIT Series from Bryan Boilers will redefine how you look at condensing boilers and boiler room layouts. AHRI certified at 97%, the BFIT is not only efficient, it is also remarkably compact, requiring half the square footage of everyone else...No one comes close to this package. Large diameter tubes deliver desired waterside characteristics for variable and full flow designs. It is also uniquely serviceable, providing complete access to the burner and combustion chamber.



SPACE SAVING INNOVATION

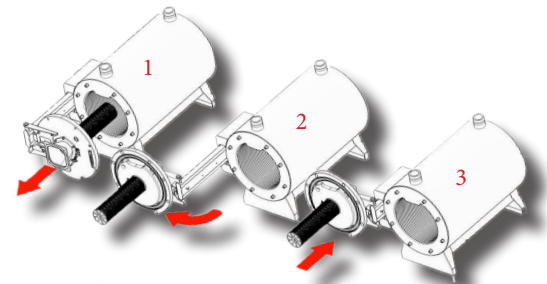
Averaging 46% less required space than the tall boxes, BFIT is the perfect solution for tight and shrinking boiler rooms. Models 1000 - 2000 fit through standard doorways and are compact for easy maneuvering. Top water connections further reduce requirements commonly added to rear dimensions. Designed to fit, an optional racking system doubles the btu's vs. competitive install limitations.

5:1 TURNDOWN

Why 5:1 turndown? Because it works and is proven time after time. No need for multiple set-ups in summer and winter or excess amounts of air, diluting your condensing efficiency at low fire. Reliability is our cornerstone and answering each and every call for heat is paramount.

SERVICE & CLEANING

Can it get any easier? The burner is mounted and fully supported on a swing-out door providing unique and complete access to the burner and combustion chamber. Service, inspections, and cleanings can be completed effortlessly, ensuring long-lasting efficiency year after year.



VARIABLE & FULL FLOW PIPING

Optimized for smaller pump selections and electrical conservation, advanced fluidics allow for single pump variable flow systems or primary/secondary layouts. Large diameter, double row tube design delivers desired traits reducing pump sizing vs. competition.

VENTING

Cat IV out of the box or Cat II common venting with an engineered venting system. Capable of up to 150 equivalent feet of vent in AL29-4C, polypropylene or CPVC.

DUAL FUEL

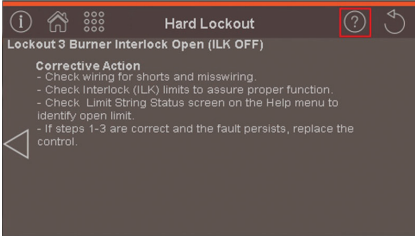
The BFIT series is dual fuel (natural gas and LP gas) rated. Providing assurances if primary fuel is unavailable or planned change in the future. Separate gas trains included and center-locking switch for manual transfer provide simple and safe change of fuels.

ADVANCED CONTROL PLATFORM – CONCERT™ CONTROL



Intuitive Icon Navigation

“Touch” and move through our control menus effortlessly. Whether it be commissioning the boiler with the “Quick Setup” menu, pinpointing fault codes with corrective actions in seconds or seamlessly connecting to an EMS. Extensive data archives with graphical displays are available to evaluate boiler performance and make value-added adjustments to maximize boiler & system efficiency.



Self-Guiding Diagnostics

Troubleshooting boiler issues has never been this easy! The industry-leading fault identification and correction feature allows the service technician to quickly drill down on the issue, with cause and corrective measures.



Unmatched Archives

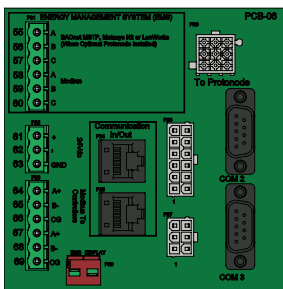
With the largest collection of stored operational data (4 months), no stone is left unturned when it comes to evaluating a boiler’s performance and pinpointing adjustment for improvement. The boiler’s onboard energy management system is a true step above all others!

USB Data Sharing

Make room on the tool belt for a flash drive as the USB data sharing port has become another important device to have in commissioning (upload/download settings from one boiler to the next), servicing (download data and email file to factory for assistance) and analyzing boiler operation (historical info can be downloaded & saved in .CRV formatted files).

Peer-To-Peer Boiler Sequencing

Unique control logic uses both temperature and firing rate of the connected boilers to sequence up to eight units in unison to optimize system efficiency. Included dual RJ45 connections make peer-to-peer and/or simultaneous EMS communications (ModBus Standard / Other Protocols Optional) a snap without the need of a separate splitter.



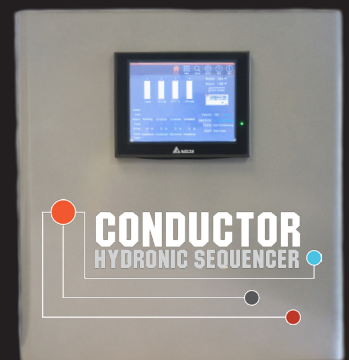
SIMPLIFIED WIRING AND SERVICEABILITY

Low and high voltage fused printed circuit boards (PCB) simplifies wiring, enhances servicability & troubleshooting with easy to read labeling, and provides electrical protection (spare fuses located on PCB for quick replacement). Other connections include: 120/1/60 voltage and pumps (boiler, system & domestic hot water); alarm; auto & manual reset external limits; enable/disable; DHW demand; 4-20mA remote; sensors (outdoor, remote and DHW); EnviraCOM thermostat; low water cutoff; and flow switch.

HARMONIZING BOILERS WITH SYSTEMS

Optional control panel integrates all makes of boilers (water or steam) for seamless, single-point connection with EMS. Improves efficiency and operation of condensing, non-condensing, hybrid or steam systems up to 8 units. “Smart Ops” select boiler type (condensing or non-condensing) based on load requirements and inputs of boilers of any size. Selectable Unison and/or Sequential modulation with base load ensures peak efficiency and maximum run time for all types of boiler technologies.

To learn more about the Conductor, visit www.BryanBoilers.com.



BFIT STANDARD EQUIPMENT

PRESSURE VESSEL DESIGN

Watertube stainless steel heat exchanger
ASME Section IV-certified, "H" Stamp
MAWP 160 PSIG & design temp 210°F
Five Year limited heat exchanger warranty
Ten year limited pressure vessel warranty
One year parts and burner warranty

COMBUSTION DESIGN

Stainless steel pre-mix burner
Low NOx emissions (<10 ppm);
Full modulation, 5:1 turndown
Natural gas, LP gas, or dual fuel
4" wc to 14" wc inlet gas pressure
8" wc LP min
Direct spark ignition system
High & low gas pressure switches w/ manual reset
Zero governor gas valve
Variable speed combustion blower
Air proving switch
Blocked vent switch
Manual fuel changeover switch

VENTING

CPVC, polypropylene or stainless steel materials acceptable
Air intake - sealed combustion or room air
Category II or IV venting
Individual or common (engineered) venting systems

BOILER EQUIPMENT

Concert Boiler Control™
High limit w/ manual reset safety temperature control
Low water cutoff w/ manual reset

Water flow switch
Supply & return water temperature sensors
Flue gas temperature sensor
Air vent valve
Condensate trap
Blocked condensate switch
Pressure & temperature gauge
ASME safety relief valve

ELECTRICAL DESIGN

High voltage printed circuit board (PCB)
BFIT1000-2500: 120, 208 or 240 VAC / 60 Hz / 1PH power supply
BFIT1500-4000: 208 or 240 VAC / 60 Hz / 1 PH power supply
BFIT1500-4000: 208, 240 or 480 VAC / 60 Hertz / 3PH power supply
VAC manual reset external limit contacts
Three sets of pump contacts
PCB fused connections

Printed Circuit Board (PCB)

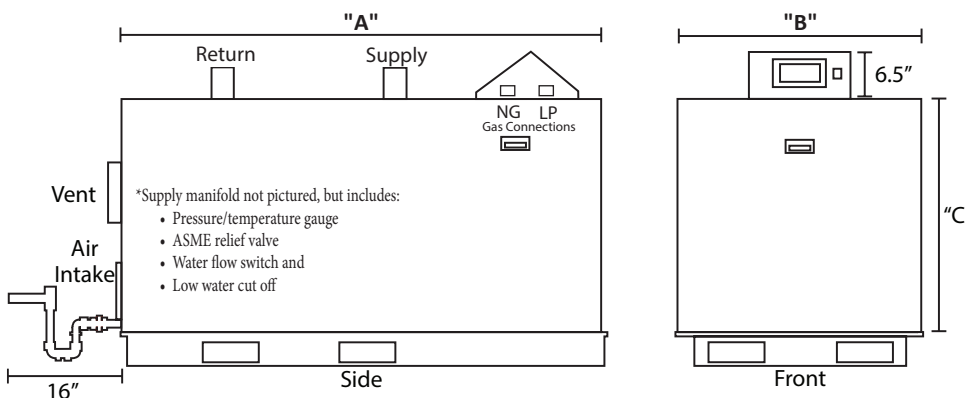
24 VAC enable/disable sensor contacts
24 to 120 VAC proving switch or auto reset external limit contacts
24 to 120 VAC lockout alarm contacts
24 VAC EnviraCom thermostat contacts
DHW demand contacts
Remote header sensor contacts
DHW tank sensor contacts
Outdoor air sensor contacts
Peer-to-peer communication contacts
EMS interface contacts
Remote 4-20mA contacts

BFIT OPTIONAL EQUIPMENT

- Hydronic kit (boiler pump & condensate neutralizer)
- Condensate neutralizer
- 30, 50, 60, 75, 100 & 125 psi ASME safety relief valve
- External high limit w/ manual reset safety switch
- Alarm buzzer w/ silencing switch
- Extended Warranty
- Stackable Rack (1000-2000)

SPECIFICATIONS, DIMENSIONS, & RATINGS

Models	Input		Gross Output (MBH)	"A" Length (Inches)	"B" Width (Inches)	"C" Height (Inches)	Gas Conn. (Inches)	Supply Grooved Conn (Inches)	Return Grooved Conn (Inches)	Vent Size (Inches)	Air Intake Size (Inches)	Approx Shipping Weight (Lbs)
	Min (MBH)	Max (MBH)										
BFIT-1000 ¹	200	1000	970	45	35	36.5	1 NPT	3	2.5	8	8	922
BFIT-1250 ¹	250	1250	1213	45	35	36.5	1 NPT	3	2.5	8	8	922
BFIT-1500 ¹	300	1500	1455	65	35	36.5	1.25NPT*	3	2.5	8	8	1217
BFIT-2000 ¹	399	1999	1939	65	35	36.5	1.25 NPT	3	2.5	8	8	1217
BFIT-2500	500	2500	2425	76	46	49	1.5 NPT	4	4	10	10	2281
BFIT-3000	600	3000	2910	76	46	49	1.5 NPT	4	4	10	10	2281
BFIT-3500	700	3500	3395	98	46	49	2 NPT	4	4	12	12	2581
BFIT-4000	799	3999	3879	98	46	49	2 NPT	4	4	12	12	2581



*BFIT-1500 LP Connection (inches) 1 NPT

¹ Energy Star Compliant

©2024 Bryan Steam LLC - Leaders Since 1916

783 N. Chili Ave., Peru, Indiana 46970 U.S.A.

PH: 765-473-6651, F: 765-473-3074

www.bryanboilers.com

Email: inquiry@bryansteam.com

108599-02 R6

CONCERT CONTROL

Dashboard - color touch screen display, 4.3"

- Intuitive icon navigation
- "Quick" setup menus
- "Real time" BTU/H display*

Two (2) temperature demand inputs

- Outdoor air reset curve for each input
- Time of day setback capability (EnviraCom thermostat must be installed)

Three (3) pump control

- Boiler pump
- Domestic hot water (DHW) pump
- System pump
- Alternative control to isolation valve, combustion air damper, or standby loss damper
- Pump overrun for heat dissipation
- Pump exercise
- Pump rotor seizing protection

Peer-to-peer boiler communications

- Multiple size boiler sequencing up to 8 units
- Two (2) boiler start/stop trigger*
- Lead boiler automatic rotation

Energy management system (EMS) interface

- Firing rate and water temperature based algorithms for multiple boilers; loss of EMS signal defaults to local boiler settings*
- 4-20mA dc input/output
- ModBus Input/Output
- Simultaneous interface with peer-to-peer

USB data port transfer*

- Upload settings between boilers
- Download parameters for troubleshooting
- Import data into .CRV formatted files for performance analysis

Energy efficiency enhancer

- Anti-cycling technology
- Multiple boiler base load common rate
- Outdoor air temperature reset curve
- Warm weather shutdown
- Boost temperature & time
- Ramp delay
- Over-temperature safeguarding

Self-guiding diagnostics

- Identifies fault
- Describes possible problems
- Provides corrective actions

Time/Date stamp on alarms and lockouts*

Unmatched archives

- Historical trends - collects up to 4 months of data
- Event History - up to 3,000 alarms, lockouts, and cycle & run times
- Cycle & run time - boilers & pumps
- Resettable

Domestic hot water priority

- DHW tank piped with priority in the boiler loop
- DHW tank piped as a zone in the system with the pumps controlled by the Concert control

Other features

- Factory default settings*
- Three level password security
- Frost protection
- Sensor monitoring and control
- Low water flow safety control & indication
- Proportion integral derivative (PID) parameters for central heat, DHW, sequencer and fan
- Built-in brown-out protection

* Unique to Bryan Boilers

CONCERT CONTROL OPTIONS

- Communications gateway - BACnet, LonWorks, Metasys N2 or ModBus TCP/IP compatible
- 0-10v signal converter
- Header sensor, direct immersion
- Header sensor, well mounted (with well)
- Outdoor air reset sensor (wired or wireless)
- Conductor Hydronic Sequencer