



# Commercial Condensing **WATER HEATER**



**1000 - 3999 MBH**



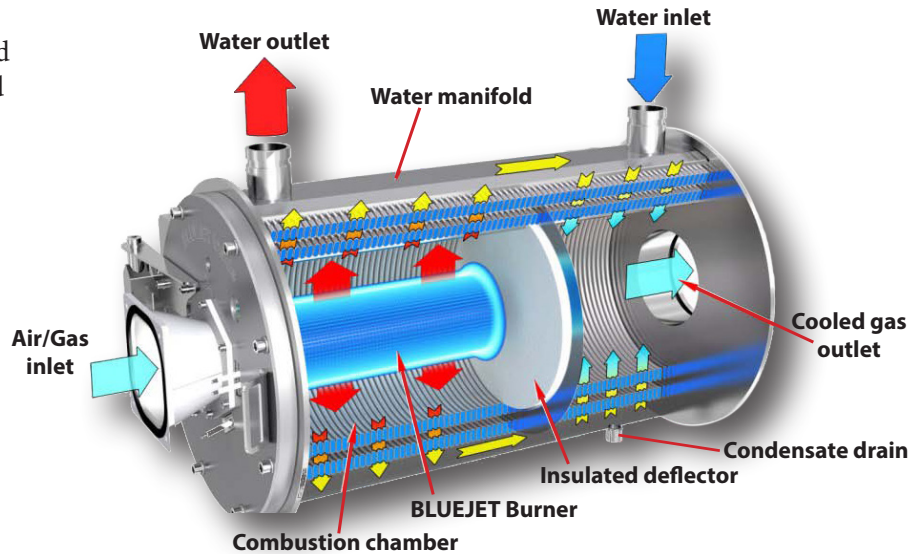
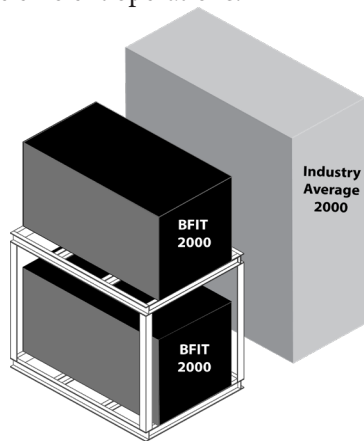
**B**<sup>TM</sup> **BRYAN**<sup>®</sup>  
**BOILERS**

# BIG OUTPUT DESIGNED TO FIT

The BFIT Condensing Water Heater Series (BFITW) from Bryan Boilers delivers efficiency with unprecedented space saving innovation in a service friendly design. Available in 1000, 1250, 1500, 1999, 2500, 3000, 3500 and 3999 MBH input levels, all models are 98% Thermal Efficiency. The 316L stainless steel heat exchanger features cavernous internal circuits with commercially sized tubes that minimize pressure drop and proactively reduce pump sizing, saving on install and electrical operations.

## WATER HEATER ADVANCEMENT

Commercial grade tubes, nearly twice the size of competitive models, promote self-cleaning and flushing of particulates. Expanded tube and header dimensions promote smaller pumps and more efficient operations.



## SPACE SAVING INNOVATION

We moved the burner from the traditional top to the side and reduced required install space by 46%, dramatically limiting the height of the heater. Models 1000-2000 MBH fit through standard doorways and are compact for easy maneuvering. All models can be Field Knock Down, with dimensions and instructions for disassembling and assembly on site. Top water and gas connections reduce requirements commonly added to rear dimensions. Designed to Fit...an optional racking system doubles the BTU's vs competitive install requirements.

## SERVICEABLE

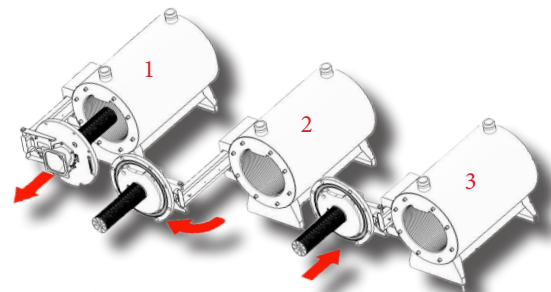
Leave it to a century old boiler company to make maintenance and service part of a water heater design. Why wasn't this done before? Gas burns clean, but fireside contaminants can form on tubes diminishing heat transfer and efficiency. All BFITW models come with supported swing-out door providing complete access to burner and combustion chamber. Service, inspections, and cleanings can be completed with ease, ensuring new, out of the box efficiency and performance for the life of the product.

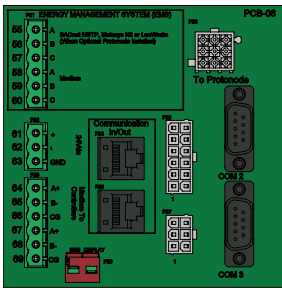
## 5:1 TURNDOWN

Why 5:1 turndown? Because it works and is proven time after time. No need for multiple set-ups in summer and winter or excess amounts of air, robbing your heater's condensing performance.

## VENTING

Cat II or IV venting for either individual or common (engineered) venting systems. Capable of up to 300 equivalent feet of vent in stainless steel, polypropylene or CPVC.





## SIMPLIFIED WIRING AND SERVICEABILITY

Low and high voltage fused printed circuit boards (PCB) simplifies wiring, enhances serviceability & troubleshooting with easy to read labeling, and provides electrical protection (spare fuses located on PCB for quick replacement). Other connections include: 120/1/60 voltage and pumps (boiler, system & domestic hot water); alarm; auto & manual reset external limits; enable/disable; DHW demand; 4-20mA remote; sensors (outdoor, remote and DHW); EnviraCOM thermostat; low water cutoff; and flow switch.



## ADVANCED CONTROL PLATFORM – CONCERT™ CONTROL

### Intuitive Icon Navigation

“Touch” and move through our control menus effortlessly. Whether it be commissioning with the “Quick Setup” menu, pinpointing fault codes with corrective actions in seconds or seamlessly connecting to an EMS. Extensive data archives with graphical displays are available to evaluate performance and make value-added adjustments to maximize heater efficiency.



### Self-Guiding Diagnostics

Troubleshooting issues has never been this easy! The industry-leading fault identification and correction feature allows the service technician to quickly drill down on the issue, with cause and corrective measures.

### Unmatched Archives

With the largest collection of stored operational data (4 months), no stone is left unturned when it comes to evaluating a heater's performance and pinpointing adjustment for improvement. The heater's onboard energy management system is a true step above all others!

### USB Data Sharing

Make room on the tool belt for a flash drive as the USB data sharing port has become another important device to have in commissioning (upload/download settings from one boiler to the next), servicing (download data and email file to factory for assistance) and analyzing operation (historical info can be downloaded & saved in .CRV formatted files).

### Peer-To-Peer Sequencing

Unique control logic uses both temperature and firing rate of the connected heaters to sequence up to eight units in unison to optimize system efficiency. Included dual RJ45 connections make peer-to-peer and/or simultaneous EMS communications (ModBus Standard / Other Protocols Optional) a snap without the need of a separate splitter.

## TANKS & PACKAGING

BFIT Water Heaters are commonly paired with hot water storage tanks. Tanks are available to suit all applications: vertical or horizontal orientation; glass, epoxy or cement-lined; metal jacketing with insulation, sprayed foam insulation or bare exterior; and in various shell materials (i.e. stainless steel). Shipped separately for field installation or skid mounted as a factory package.



### DUAL FUEL

BFIT Water Heaters are dual fuel (natural gas and LP gas) rated. Providing assurances if primary fuel is unavailable or planned change in the future. Separate gas trains included and center-locking switch for manual transfer provide simple and safe change of fuels.



### BFITW STANDARD EQUIPMENT

<b>PRESSURE VESSEL DESIGN</b>	Low water cutoff w/ manual reset
Water tube stainless steel heat exchanger	Water flow switch
ASME Section IV-certified, "HLW" Stamp (1000-2000)	Supply, return & DHW water temperature sensors
ASME Section IV-certified, "H" Stamp (2500+)	Flue gas temperature sensor
MAWP 160 PSIG & design temp 210°F	Condensate trap
Five Year limited heat exchanger warranty	Blocked condensate switch
Ten year limited pressure vessel warranty	Pressure & temperature gauge
One year parts and burner warranty	ASME safety temperature & pressure valve
	Water circulation pump
<b>COMBUSTION DESIGN</b>	<b>ELECTRICAL DESIGN</b>
Stainless steel pre-mix burner	<u>High voltage printed circuit board (PCB)</u>
Low NOx emissions (<10 ppm);	BFITW1000-2500: 120, 208 or 240 VAC / 60 Hz / 1PH power supply
Full modulation, 5:1 turndown	BFITW1500-4000: 208 or 240 VAC / 60 Hz / 1PH power supply
Natural gas, LP gas, or Dual Fuel	BFITW1500-4000: 208, 240 or 460 VAC / 60 Hz / 3PH power supply
4" wc to 14" wc inlet gas pressure	120 VAC manual reset external limit contacts
8" wc LP min	Three sets of pump contacts
Direct spark ignition system	PCB fused connections
High & low gas pressure switches w/ manual reset	<u>Printed Circuit Board (PCB)</u>
Zero governor gas valve	24 VAC enable/disable sensor contacts
Variable speed combustion blower	24 to 120 VAC proving switch or auto reset external limit contacts
Air proving switch	24 to 120 VAC lockout alarm contacts
Blocked vent switch	24 VAC EnviraCom thermostat contacts
Manual fuel changeover switch	DHW demand contacts
<b>VENTING</b>	Remote header sensor contacts
CPVC, polypropylene or stainless steel materials acceptable	DHW tank sensor contacts
Air intake - sealed combustion or room air	Peer-to-peer communication contacts
Category II or IV venting	EMS interface contacts
Individual or common (engineered) venting systems	Remote 4-20mA contacts
<b>EQUIPMENT</b>	
Concert Control™	
High limit w/ manual reset safety temperature control	

### BFITW OPTIONAL EQUIPMENT

- External high limit w/ manual reset safety switch
- Extended Warranty
- Alarm buzzer w/ silencing switch
- Stackable Rack (1000-2000)

## SPECIFICATIONS, DIMENSIONS, & RATINGS

Models	Input		Gross Output (MBH)	DHW Recovery (GPH)*	"A" Length (Inches)	"B" Width (Inches)	"C" Height (Inches)	Gas/LP Conn. (Inches)	Supply Grooved Conn (Inches)	Return Grooved Conn (Inches)	Air Intake/Vent Size (Inches)	Approx Shipping Weight (Lbs)
	Min (MBH)	Max (MBH)										
BFITW-1000	200	1000	980	1188	45	35	36.5	1 NPT	3	2.5	8	922
BFITW-1250	250	1250	1225	1485	45	35	36.5	1 NPT	3	2.5	8	922
BFITW-1500	300	1500	1470	1782	65	35	36.5	1.25 NPT**	3	2.5	8	1217
BFITW-2000	399	1999	1960	2376	65	35	36.5	1.25 NPT	3	2.5	8	1217
BFITW-2500	500	2500	2450	2970	76	46	49	1.5 NPT	4	4	10	2038
BFITW-3000	600	3000	2940	3564	76	46	49	1.5 NPT	4	4	10	2038
BFITW-3500	700	3500	3430	4158	98	46	49	2 NPT	4	4	12	2485
BFITW-4000	799	3999	3920	4752	98	46	49	2 NPT	4	4	12	2485

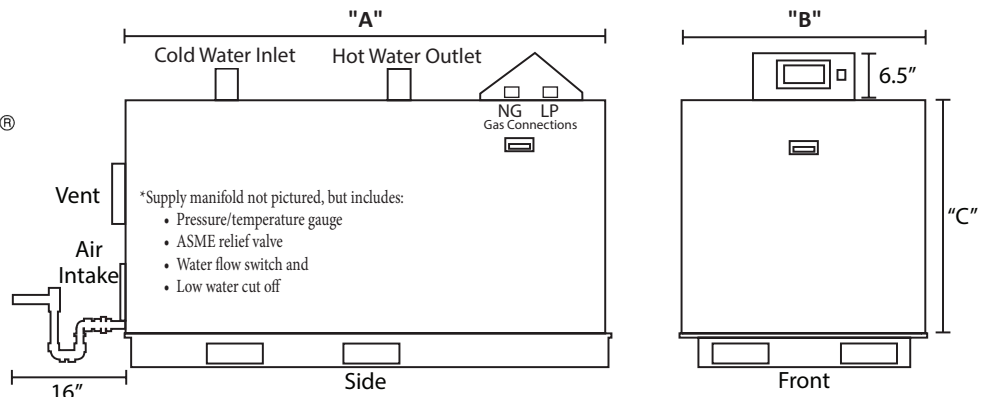
\*Based on 40°F to 140°F temperature rise

\*\*BFITW-1500 LP connection (inches) 1 NPT



©2024 Bryan Steam LLC - Leaders Since 1916  
 783 N. Chili Ave., Peru, Indiana 46970 U.S.A.  
 PH: 765-473-6651, F: 765-473-3074  
 www.bryanboilers.com  
 Email: inquiry@bryansteam.com

108599-04 R2



### CONCERT CONTROL

<b>Dashboard - color touch screen display, 4.3"</b>	<b>Energy efficiency enhancer</b>
- Intuitive icon navigation	- Anti-cycling technology
- "Quick" setup menus	- Multiple unit base load common rate
- "Real time" BTU/H display*	- Boost temperature & time
<b>Temperature demand input</b>	- Ramp delay
- Time of day setback capability (EnviraCom thermostat must be installed)	- Over-temperature safeguarding
<b>Two (2) pump control</b>	<b>Self-guiding diagnostics</b>
- DHW pump with On/Off or variable speed control	- Identifies fault
- System pump	- Describes possible problems
- Alternative control to isolation valve, combustion air damper, or standby loss damper	- Provides corrective actions
- Pump overrun for heat dissipation	<b>Time/Date stamp on alarms and lockouts*</b>
- Pump exercise	<b>Unmatched archives</b>
- Pump rotor seizing protection	- Historical trends - collects up to 4 months of data
<b>Peer-to-peer boiler communications</b>	- Event history - up to 3,000 alarms, lockouts, and cycle & run times
- Multiple size unit sequencing; up to 8 units	- Alarm - limit string faults, holds, lockouts & others
- Lead unit automatic rotation	- Cycle & run time - water heaters & pumps
<b>Energy management system (EMS) interface</b>	- Resettable
- Firing rate and water temperature based algorithms for multiple units; loss of EMS signal defaults to local settings*	<b>Domestic hot water priority</b>
- 4-20mA dc input/output	- DHW tank piped with priority in the boiler loop
- ModBus Input/Output	- DHW tank piped as a zone in the system with the pumps controlled by the Concert Control
- Simultaneous interface with peer-to-peer	<b>Other features</b>
<b>USB data port transfer*</b>	- Factory default settings*
- Upload settings between units	- Three level password security
- Download parameters for troubleshooting	- Frost protection
- Import data into .CRV formatted files for performance analysis	- Contractor contacts (up to 3)
	- Low water flow control & indication
	- Proportion integral derivative (PID) parameters for DHW, sequencer and fan
	- Built-in brown-out protection

\* Unique to Concert Control

### CONCERT CONTROL OPTIONS

- Communications gateway - BACnet, LonWorks, Metasys N2 or ModBus TCP/IP compatible
- Header sensor, direct immersion
- 0-10v signal converter
- Header sensor, well mounted (with well)