

BFIIT

COMMERCIAL CONDENSING BOILERS WITH THE POWER TO FIT



- 399, 500, 650, 800, 999 MBH
- Serviceable, Cleanable
- 10:1 turndown
- Concert™ touch screen display
- Indoor or outdoor jacket options
- Stackable without a rack
- Designed and made in the USA



ZONE 3-CAFETERIA

BRYAN BOILERS

97%
EFFICIENT

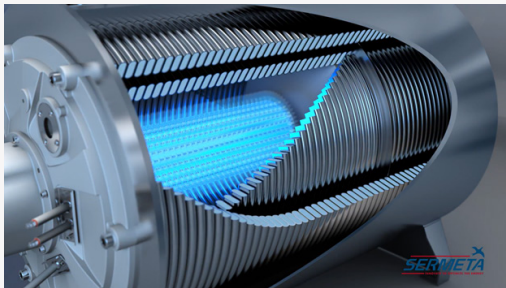


EFFICIENCY MEETS SERVICEABILITY

The BFIT Commercial Condensing Boiler Series from Bryan Boilers delivers efficiency and powerful output with unprecedented space saving innovation in a service friendly design. Now available in 399, 500, 650, 800, and 999 MBH input levels, all models are 97% Thermal Efficient and modulate at 10:1 firing rate. The 316L stainless steel heat exchanger features cavernous internal circuits with commercially sized tubes that promote self-cleaning and flushing of waterside particulates.

GAME CHANGING ADVANCEMENT

Commercial grade tubes, nearly twice the size of competitive models, promote self-cleaning and flushing of particulates.



SPACE SAVING INNOVATION

We moved the burner from the traditional bottom to the side and reduced required install height by 46%. Models 400-1000L fit through standard doorways and are compact for easy maneuvering. Designed to fit, BFIT 400-1000L models can be stacked on their respective sizes with mounting brackets only (no racking needed). Outdoor models are available and can be stacked or set up with zero clearance on one side.



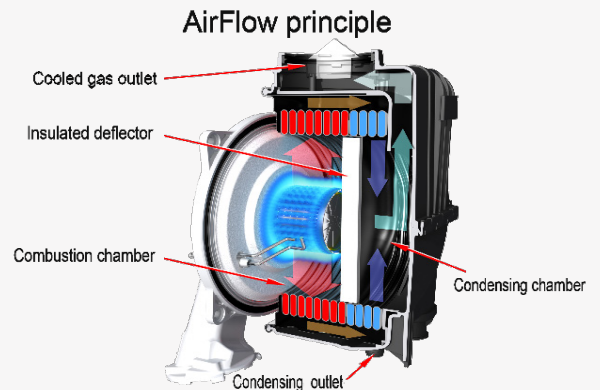
BFIT Stacked

BFIT with outdoor jacket



SERVICEABLE

The BFIT commercial condensing boiler platform is focused on service, reliability, and longevity. All BFIT models provide complete access to burner and combustion chamber. Gas burns clean but can greatly diminish heat transfer over time if not cleaned. Cleanings can be completed with ease, ensuring new, out of the box efficiency is maintained throughout the life of the product.



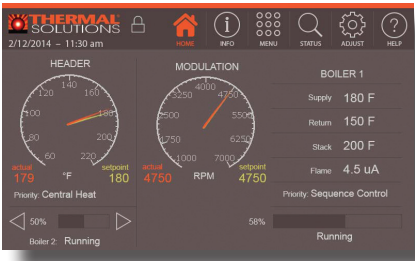
10:1 TURNDOWN

Reliability is our cornerstone and that means answering each and every call for heat. We take additional measures, so you don't have any missteps. Extensive 50+ mile per hour wind tests at our vent outlet ensure the reliability of this product.

VENTING

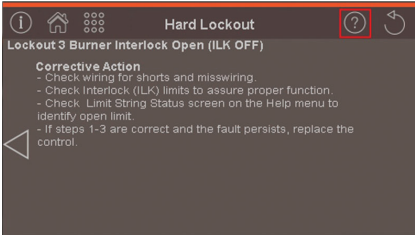
Cat II or IV venting for either individual or common (engineered) venting systems. Capable of up to 200 equivalent feet of vent in stainless steel, polypropylene or CPVC.

ADVANCED CONTROL PLATFORM – CONCERT™ CONTROL



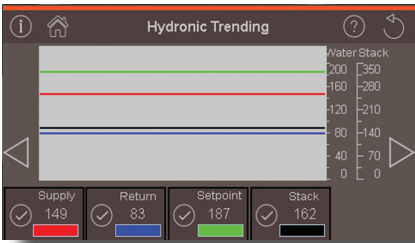
Intuitive Icon Navigation

“Touch” and move through our control menus effortlessly. Whether it be commissioning with the “Quick Setup” menu, pinpointing fault codes with corrective actions in seconds or seamlessly connecting to an EMS. Extensive data archives with graphical displays are available to evaluate performance and make value-added adjustments to maximize heater efficiency.



Self-Guiding Diagnostics

Troubleshooting issues has never been this easy! The industry-leading fault identification and correction feature allows the service technician to quickly drill down on the issue, with cause and corrective measures.



Unmatched Archives

With the largest collection of stored operational data (4 months), no stone is left unturned when it comes to evaluating a heater’s performance and pinpointing adjustment for improvement. The heater’s onboard energy management system is a true step above all others!



USB Data Sharing

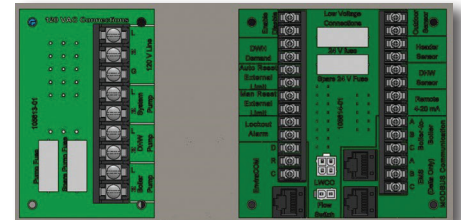
Make room on the tool belt for a flash drive as the USB data sharing port has become another important device to have in commissioning (upload/download settings from one to the next), servicing (download data and email file to factory for assistance) and analyzing operation (historical info can be downloaded & saved in .CRV formatted files).

Peer-To-Peer Sequencing

Unique control logic uses both temperature and firing rate of the connected s to sequence up to eight units in unison to optimize system efficiency. Included dual RJ45 connections make peer-to-peer and/or simultaneous EMS communications (ModBus Standard / Other Protocols Optional) a snap without the need of a separate splitter.

SIMPLIFIED WIRING AND SERVICEABILITY

Low and high voltage fused printed circuit boards (PCB) simplifies wiring, enhances serviceability & troubleshooting with easy to read labeling, and provides electrical protection (spare fuses located on PCB for quick replacement). Other connections include: 120/1/60 voltage and pumps (boiler system & domestic hot water); alarm; auto & manual reset external limits; enable/disable; DHW demand; 4-20mA remote; sensors (outdoor, remote and DHW); EnviraCOM thermostat; low water cutoff; and flow switch.



HARMONIZING BOILERS WITH SYSTEMS

Optional control panel integrates all makes of boilers (water or steam) for seamless, single-point connection with EMS. Improved efficiency and operation of condensing, non-condensing, hybrid or steam systems up to 8 units. "Smart Ops" select boiler type (condensing or non-condensing) based on load requirements and inputs of boilers of any size. Selectable unison and/or sequential modulation with base load ensures peak efficiency and maximum run time for all types of boiler technologies.

BFIT STANDARD EQUIPMENT (400-1000L MODELS)

PRESSURE VESSEL DESIGN

Watertube stainless steel heat exchanger
ASME Section IV-certified, "H" Stamp
MAWP 160 PSIG & design temp 210°F
Five Year limited heat exchanger warranty
Ten year limited pressure vessel warranty
One year parts and burner warranty
CSD-1 compliant

Water flow switch
Supply & return, and water temperature sensors
Flue gas temperature sensor
Condensate trap
Blocked condensate switch
Pressure & temperature gauge
ASME safety temperature & pressure relief valve

COMBUSTION DESIGN

Stainless steel pre-mix burner
Low NOx emissions (<10 ppm);
Full modulation, 10:1 turndown
Natural gas or LP gas
4" wc to 14" wc inlet gas pressure
8" wc LP min
Direct spark ignition system
High/low gas pressure switches w/ manual reset
Combustion air switch
Modulating gas valve
Variable speed combustion blower
Air proving switch
Blocked vent switch

ELECTRICAL DESIGN

High voltage printed circuit board (PCB)
BFIT 400-1000L: 120 VAC / 60 Hz / 1PH power supply
120 VAC manual reset external limit contacts
Three sets of pump contacts
PCB fused connections

Printed Circuit Board (PCB)

24 VAC enable/disable sensor contacts
24 to 120 VAC proving switch or auto reset external limit contacts
24 to 120 VAC lockout alarm contacts
24 VAC EnviraCom thermostat contacts
DHW demand contacts
Remote header sensor contacts
DHW tank sensor contacts
Peer-to-peer communication contacts
EMS interface contacts
Remote 4-20mA contacts

VENTING

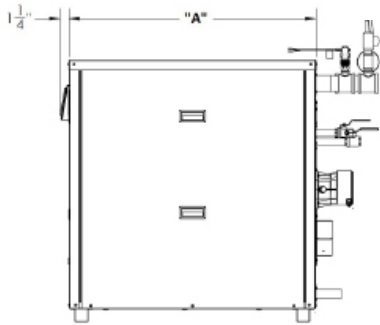
CPVC, polypropylene or stainless steel materials acceptable
Air intake - sealed combustion or room air
Category II or IV venting
Individual or common (engineered) venting systems

BOILER EQUIPMENT

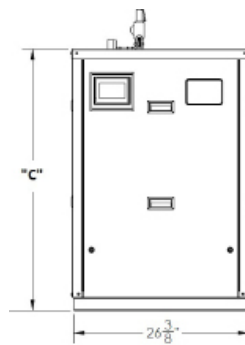
Concert Control™
High limit w/ manual reset safety temperature control
Low water cutoff w/ manual reset

BFIT OPTIONAL EQUIPMENT

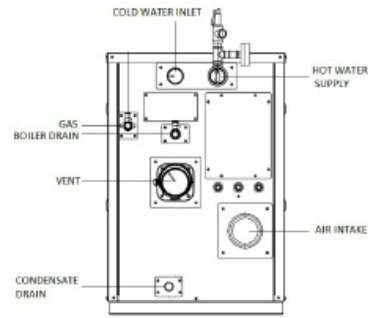
- Hydronic kit (boiler pump & condensate neutralizer)
- Condensate neutralizer
- 30, 50, 60, 70, 100 & 125 psi ASME safety relief valve
- External high limit w/ manual reset safety switch
- Alarm buzzer w/ silencing switch
- Extended Warranty
- Brackets to stack boilers (2 high)



SIDE



FRONT



REAR

SPECIFICATIONS, DIMENSIONS, & RATINGS

Models	Input		Gross Output (MBH)	"A" Length (In)	Width (In)	"C" Height (In)	Gas / LP Conn. (In)	Supply Conn (In)	Return Conn (In)	Vent/Air Intake Size (In)	Approx Shipping Weight (Lbs)
	Min (MBH)	Max (MBH)									
BFIT-400	40	399	388	37-3/4	26-3/8	38-1/2	3/4 NPT	2	2	4	460
BFIT-500	50	500	485	37-3/4	26-3/8	38-1/2	3/4 NPT	2	2	4	470
BFIT-650	65	650	631	53-7/8	26-3/8	38-1/2	1 NPT	2	2	6	530
BFIT-800	80	800	776	53-7/8	26-3/8	38-1/2	1 NPT	2	2	6	560
BFIT-1000L	99	999	969	53-7/8	26-3/8	38-1/2	1 NPT	2	2	6	600

CONCERT CONTROL

Dashboard - color touch screen display, 4.3"

- Intuitive icon navigation
- "Quick" setup menus
- "Real time" BTU/H display*

Two (2) temperature demand inputs

- Outdoor air reset curve for each input
- Time of day setback capability (EnviraCom thermostat must be installed)

Three (3) pump control

- Boiler pump with On/Off or variable speed control
- Domestic hot water (DHW) pump
- System pump
- Alternative control to isolation valve, combustion air damper, or standby loss damper
- Pump overrun for heat dissipation
- Pump exercise
- Pump rotor seizing protection

Peer-to-peer communications

- Multiple size boiler sequencing; up to 8 units
- Two (2) boiler start/stop trigger*
- Lead boiler automatic rotation

Energy management system (EMS) interface

- Firing rate and water temperature based algorithms for multiple units; loss of EMS signal defaults to local settings*
- 4-20mA dc input/output
- ModBus input/output
- Simultaneous interface with peer-to-peer

USB data port transfer*

- Upload settings between units
- Download parameters for troubleshooting
- Import data into .CRV formatted files for performance analysis

Energy efficiency enhancer

- Anti-cycling technology
- Multiple boiler base load common rate
- Outdoor air temperature reset curve
- Warm weather shutdown
- Boost temperature & time
- Ramp delay
- Over-temperature safeguarding

Self-guiding diagnostics

- Identifies fault
- Describes possible problems
- Provides corrective actions

Time/Date stamp on alarms and lockouts*

Unmatched archives

- Historical trends - collects up to 4 months of data
- Event history - up to 3,000 alarms, lockouts, and cycle & run times
- Alarm - limit string faults, holds, lockouts & others
- Cycle & run time - water heaters & pumps
- Resettable

Domestic hot water priority

- DHW tank piped with priority in the loop
- DHW tank piped as a zone in the system with the pumps controlled by the Concert Control

Other features

- Factory default settings*
- Three level password security
- Frost protection
- Contractor contacts (up to 3)
- Low water flow control & indication
- Proportion integral derivative (PID) parameters for central heat, DHW, sequencer and fan
- Built-in brown-out protection

* Unique to Concert Control

CONCERT CONTROL OPTIONS

- Communications gateway - BACnet, LonWorks, Metasys N2 or ModBus TCP/IP compatible
- 0-10v signal converter
- Header sensor, direct immersion
- Header sensor, well mounted (with well)
- Outdoor air reset sensor (wired or wireless)
- Conductor Hydronic Sequencer