



# SUBMITTAL DATA SHEET

JOB NAME: \_\_\_\_\_  
 LOCATION: \_\_\_\_\_  
 ENGINEER: \_\_\_\_\_  
 WHOLESALER: \_\_\_\_\_  
 CONTRACTOR: \_\_\_\_\_  
 SUBMITTED TO: \_\_\_\_\_  
 MODEL DESIGNATION: \_\_\_\_\_ FUEL: \_\_\_\_\_

DATE: \_\_\_\_\_



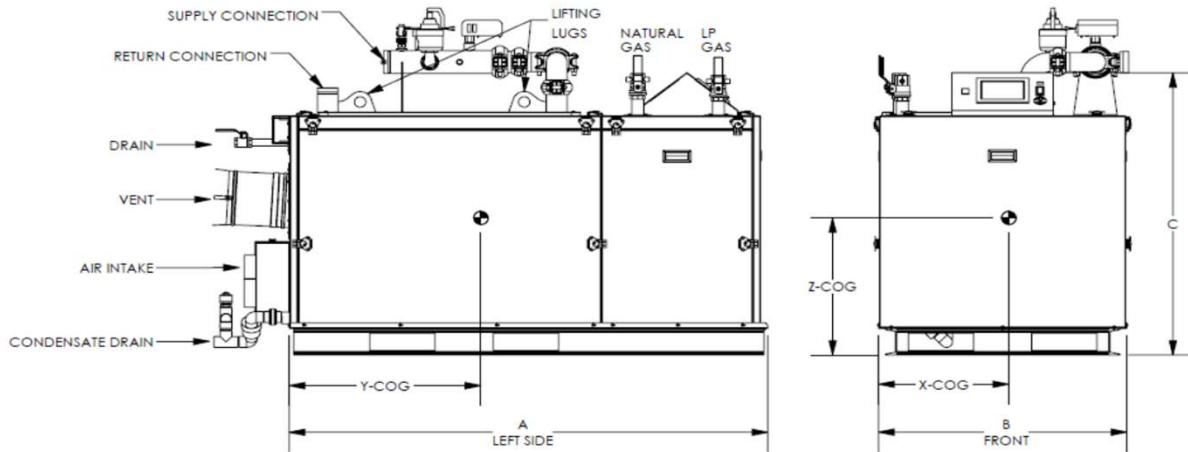
CHECK ONE: \_\_\_\_\_ REFERENCE (NOT FOR PRODUCTION)  
 \_\_\_\_\_ APPROVED (IMMEDIATE PRODUCTION)  
 \_\_\_\_\_ APPROVED WITH CHANGES NOTED (IMMEDIATE PRODUCTION)

## RATINGS AND TECHNICAL DATA

MODELS	INPUT		GROSS OUTPUT (MBH)	THERMAL EFFICIENCY (%)	HEATING SURFACE (SQ/FT)	WATER CONTENT (GAL.)	*FUEL		SHIPPING WEIGHT (LBS)
	MIN (MBH)	MAX (MBH)					NAT. GAS MIN / MAX	PROPANE MIN / MAX	
BFITW-1000	200	999	970	97.0%	100	12.0	4"/14"wc	8"/14"wc	922
BFITW-1250	250	1250	1213	97.0%	100	12.0	4"/14"wc	8"/14"wc	922
BFITW-1500	300	1500	1455	97.0%	120	13.9	4"/14"wc	8"/14"wc	1217
BFITW-2000	400	1999	1940	97.0%	153	17.2	4"/14"wc	8"/14"wc	1217
BFITW-2500	500	2500	2425	97.0%	301	34.6	4"/14"wc	8"/14"wc	2281
BFITW-3000	600	3000	2910	97.0%	301	34.6	4"/14"wc	8"/14"wc	2281
BFITW-3500	700	3500	3395	97.0%	403	47.1	4"/14"wc	8"/14"wc	2581
BFITW-4000	800	3999	3880	97.0%	403	47.1	4"/14"wc	8"/14"wc	2581

\*Single or Dual Fuel Options

## DIMENSIONS



MODELS	"A" LENGTH (Inches)	"B" WIDTH (Inches)	"C" HEIGHT (Inches)	VENT / AIR INTAKE		GAS (Inches)	SUPPLY	RETURN
				SIZE (Inches)	EQUIV. LENGTH (Ft.)		Grooved Connection (Inches)	
BFITW-1000	45-1/2"	34-1/4"	42-3/4"	8	Up to 300	1 NPT	3	2-1/2
BFITW-1250	45-1/2"	34-1/4"	42-3/4"	8	Up to 300	1 NPT	3	2-1/2
BFITW-1500	66-1/8"	34-1/4"	42-3/4"	8	Up to 300	** 1-1/4 NPT	3	2-1/2
BFITW-2000	66-1/8"	34-1/4"	42-3/4"	8	Up to 200	1-1/4 NPT	3	2-1/2
BFITW-2500	75-5/8"	46"	54-7/8"	10	Up to 300	1-1/2 NPT	4	4
BFITW-3000	75-5/8"	46"	54-7/8"	10	Up to 300	1-1/2 NPT	4	4
BFITW-3500	97-1/8"	46"	54-7/8"	12	Up to 300	2 NPT	4	4
BFITW-4000	97-1/8"	46"	54-7/8"	12	Up to 300	2 NPT	4	4

\*\* Propane is 1" NPT



# SUBMITTAL DATA SHEET

## STANDARD EQUIPMENT

### PRESSURE VESSEL DESIGN

Stainless Steel Heat Exchanger  
 ASME Section IV Certified, "H" Stamp  
 MAWP 160 PSIG & Max Temp 210°F  
 Setpoint range is 60-185°F  
 Adjustable, manual reset high limit setting of ≤ 200°F.  
 ASME HLW stamp MAWT is 210°F for the vessel.  
 (For max setpoint, see Setpoint range.)  
 Five Year Limited Heat Exchanger Warranty  
 Ten Year Limited Pressure Vessel Warranty

### BOILER EQUIPMENT

Concert™ Control (24 Vac)  
 High Limit Temp Control, Manual Reset  
 Low water cutoff, manual reset  
 Water Flow Switch  
 Supply & Return Water Temperature Sensors  
 Flue Gas Temperature Sensor  
 Condensate trap  
 Blocked Condensate Switch  
 Pressure & Temperature Gauge  
 ASME Temperature & Pressure Safety Relief Valve, 150 psi

### COMBUSTION DESIGN

Stainless Steel Pre-Mix Burner  
 Low NOx Emissions (< 10 ppm)  
 Full Modulation, 5:1 Turndown  
 Natural Gas, Propane or Dual Fuel (Gas/Gas)  
 4" wc (8" wc Propane) to 14" wc inlet gas pressure  
 Direct Spark Ignition System with UV Scanner  
 High/Low gas pressure switches, manual reset  
 Zero governor gas valve  
 Variable Speed Combustion Blower  
 Air Proving Switch  
 Blocked Vent Switch  
 Manual fuel changeover switch (Dual Fuel Only)

### ELECTRICAL DESIGN

**Models 1000-2500:**  
 - 120-208-230VAC/60HZ/1PH - High Voltage  
 (1500 to 2500 - Optional 208-230-460VAC/60HZ/3PH)  
**Models 3000:**  
 - 208-230-240VAC/60HZ/1PH - High Voltage  
 - 208-230-240-460VAC/60HZ/3PH - High Voltage  
**Models 3500-4000:**  
 - 208-230-240-460VAC/60HZ/3PH - High Voltage  
 - PCB (Printed Circuit Board) Fused Connections  
24VAC/5VDC - Low Voltage PCB  
 - EMS Communications  
 (Dual RJ45 Jacks for Peer-To-Peer or ModBus)  
 - Boiler Options (Sensors)  
 - Pumps (Boiler, DHW, System) & Auxiliary Devices

### VENTING

Category II or IV Venting  
 Individual or Common (Engineered) Vent System  
 Vertical or Horizontal  
 CPVC, PP or SS Venting \*Materials Acceptable  
 Combustion Air Intake - Sealed or Room

\* Flue system material shall be capable of continuous operation at 210°F or higher & shall be certified to UL 1738 – venting system for gas-burning appliances cat II, III and IV.

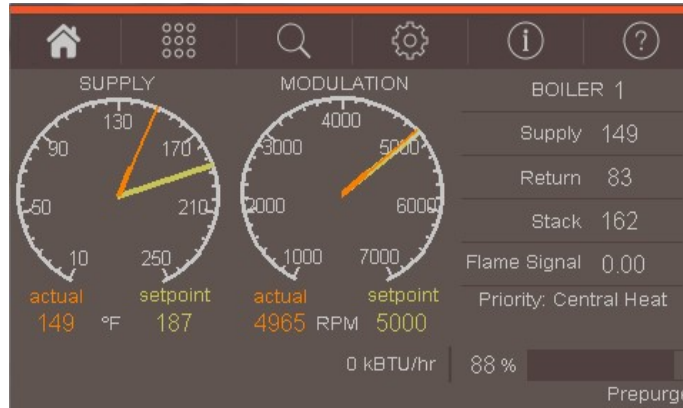
## OPTIONAL EQUIPMENT

- \_\_\_\_\_ Hydronic Kit (Boiler Circulation Pump, Pump Flange Kit and Condensate Neutralizer)
- \_\_\_\_\_ External High Limit Temperature Control, Manual Reset
- \_\_\_\_\_ Condensate Neutralizer
- \_\_\_\_\_ Supply Header Temperature Sensor:     Direct Immersion     Well Immersion (with Well)
- \_\_\_\_\_ Outdoor Air Temperature Sensor:     Wired     Wireless
- \_\_\_\_\_ EMS Signal Converter Kit (Converts Energy or Building Management System 0-10v signal to 4-20mA)
- \_\_\_\_\_ Motorized Isolation Valves
- \_\_\_\_\_ Alarm Buzzer with Silencing Switch
- \_\_\_\_\_ Gas Valve Proving Switch
- \_\_\_\_\_ Vent Adapter - CPVC
- \_\_\_\_\_ Universal Communications Gateway (BACnet, Metasys, Modbus or Lonworks)
- \_\_\_\_\_ Stackable Rack
- \_\_\_\_\_ Conductor Sequencing Panel  
 The Conductor manages multiple condensing & non-condensing, small & large heat output, new and/or existing boilers (full modulation or on-off), and steam or hot water applications. It helps improve system efficiency by selecting and modulating the right boiler to match operating conditions. The Conductor offers a single point boiler plant Energy Management System (EMS) interface including Modbus TCP/IP, Modbus RTU RS485, BACnet/IP and BACnet MSTP standard. If Lonworks needed, add for the separate Lonworks gateway.
- \_\_\_\_\_ Extended Warranty  
 3 Year Parts     5 Year Parts     10-Year Parts     5-Yr. Prts/Lbr.     10 Yr. Prts/Lbr



# SUBMITTAL DATA SHEET

## CONCERT CONTROL FEATURES



### Dashboard - Color Touchscreen Display, 7"

- Intuitive Icon Navigation
- "Quick" Setup Menus
- \*Real Time BTU/H Display

### Two (2) Temperature Demand Inputs

- Outdoor Air Reset Curve for Each Input
- Time of Day Setback Capability  
(Envirocom Thermostat must be installed)

### Three (3) Pump Control

- Boiler Pump With On/Off or Variable Speed Control
- Domestic Hot Water (DHW) Pump
- System Pump
- Alternative Control to Isolation Valve, Combustion Air Damper or Standby Loss Damper
- Pump Overrun for Heat Dissipation
- Pump Exercise
- Pump Rotor Seizing Protection

### Peer-to-Peer Boiler Communications

- Multiple Size Boiler Sequencing Up to 8 Units
- \*Two (2) Boiler Start/Stop Trigger
- Lead Boiler Automatic Rotation

### Energy Management System (EMS) Interface

- \*Firing Rate and Water Temperature Based Algorithms for Multiple Boilers; loss of EMS signal defaults to local boiler settings
- 4-20mA Input/Output (0-10Vdc Optional Converter)
- ModBus Input/Output (BACnet or LonWorks Optional Gateway)
- Simultaneous Interface with Peer-to-Peer

### \*USB Data Port Transfer

- Upload Settings Between Boilers
- Download Parameters for Troubleshooting
- Import Data into .CRV Formatted Files for Performance Analysis

\* Unique to Concert

### Energy Efficiency Enhancer

- Anti-Cycling Technology
- Multipler boiler base load common rate
- Outdoor Air Temperature Reset Curve
- Warm Weather Shutdown
- Boost Temperature & Time
- Ramp Delay
- Over-Temperature Safeguarding

### Self-Guiding Diagnostics

- Identifies Fault
- Describes Possible Problems
- Provides Corrective Actions
- \*Time/Date Stamp on Alarms and Lockouts

### Unmatched Archives

- Historical Trends - Collects Up to 4 months Data
- Event History - Up to 3000 Alarms, Lockouts and Cycle & Run Times
- Alarm - Limit String Faults, Holds, Lockouts and Others
- Cycle & Run Time - Boilers & Pumps
- Resettable (Lockouts/Alarms/Cycles & Run Time)

### Domestic Hot Water Priority

- DHW Tank Piped With Priority in the Boiler Loop
- DHW Tank Piped as a Zone in the System With the Pumps Controlled by the Concert Control
- DHW Modulation Limiting
- Status Screens
- Sensor Monitoring and Control

### Other Features

- \*Factory Default Settings
- Three Level Password Security
- Frost Protection
- Contractor Contacts (Up to 3)
- Low Water Flow Safety Control & Indication
- Proportion Integral Derivative (PID) Parameters for Central Heat, DWH, Sequencer and Fan
- Built-in Brown-Out Protection

